

LEA Name : Central Bucks Area #0  
Address : Central Bucks Area #0 Administrative Offices  
Bryn Mawr, PA, 19010

County : Berks  
AUM Number : 11402150  
LEA Type : 00

**Annual Financial Report**  
**Accuracy Certification Statement**  
For Fiscal Year Ending  
6/30/2015

Pennsylvania Department of Education  
is  
Office of Comptroller Operations  
PDE-205K: Intermediate Unit  
PDE-2057: School District, AVTS/GTC, Charter School,  
and Special Program Jobsite

**CERTIFICATION:** By signing this page I agree that the electronic data submitted is a complete and accurate statement of the financial operations and status of the local education agency for the fiscal year. It has been prepared in accordance with generally accepted accounting principles and established Commonwealth of PA reporting guidelines.

  
Kathleen Haines  
Chief School Administrator Signature

\_\_\_\_\_  
Board Secretary Signature

\_\_\_\_\_  
Date

\_\_\_\_\_  
Title

Kathleen Haines  
Contact Person

\_\_\_\_\_  
Contact Person Telephone Number

Kathleen.Haines@sbocome.org  
Contact Person E-mail Address

\_\_\_\_\_  
Contact Person Fax Number

(610)862-0140 Ext:1163

(610)862-0215

**Audit Certification**  
**Annual Financial Report:**  
For Fiscal Year Ending 6/30/2018  
(Pursuant to PA School Code Section 218(b))

LEA Name : Daniel Boone Area SD  
AUN Number : 114061503  
County : Berks

<b>Audit Certification Due:</b> 12/31/2018
---

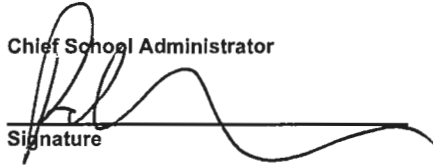
This certification is applicable to the Annual Financial Report data submitted through the Consolidated Financial Reporting System on: 10/31/2018  
Date

**Auditing Firm:**  
Herbein + Company  
2763 Century Blvd.  
  
Reading , PA , 19610-

**Auditor Contact Name:** Roxanne McMurtry  
**Auditor Phone:** (610)378-1175  
**Auditor E-mail:** rnmcmurtry@herbein.com

CERTIFICATION: By signing this page I agree that the financial statements of the school have been properly audited as noted above pursuant to Article XXIV, and in the auditor's professional opinion, the Annual Financial Report (PDE-2057) submitted on the date referenced is materially consistent with the audited financial statements.

Chief School Administrator

  
Signature

12/17/18  
Date

Board Secretary

  
Signature

12/17/2018  
Date

Kathlene Haines

\_\_\_\_\_  
Contact Person

Kathlene.Haines@dboone.org

\_\_\_\_\_  
Contact Person E-mail Address

(610)582-6140

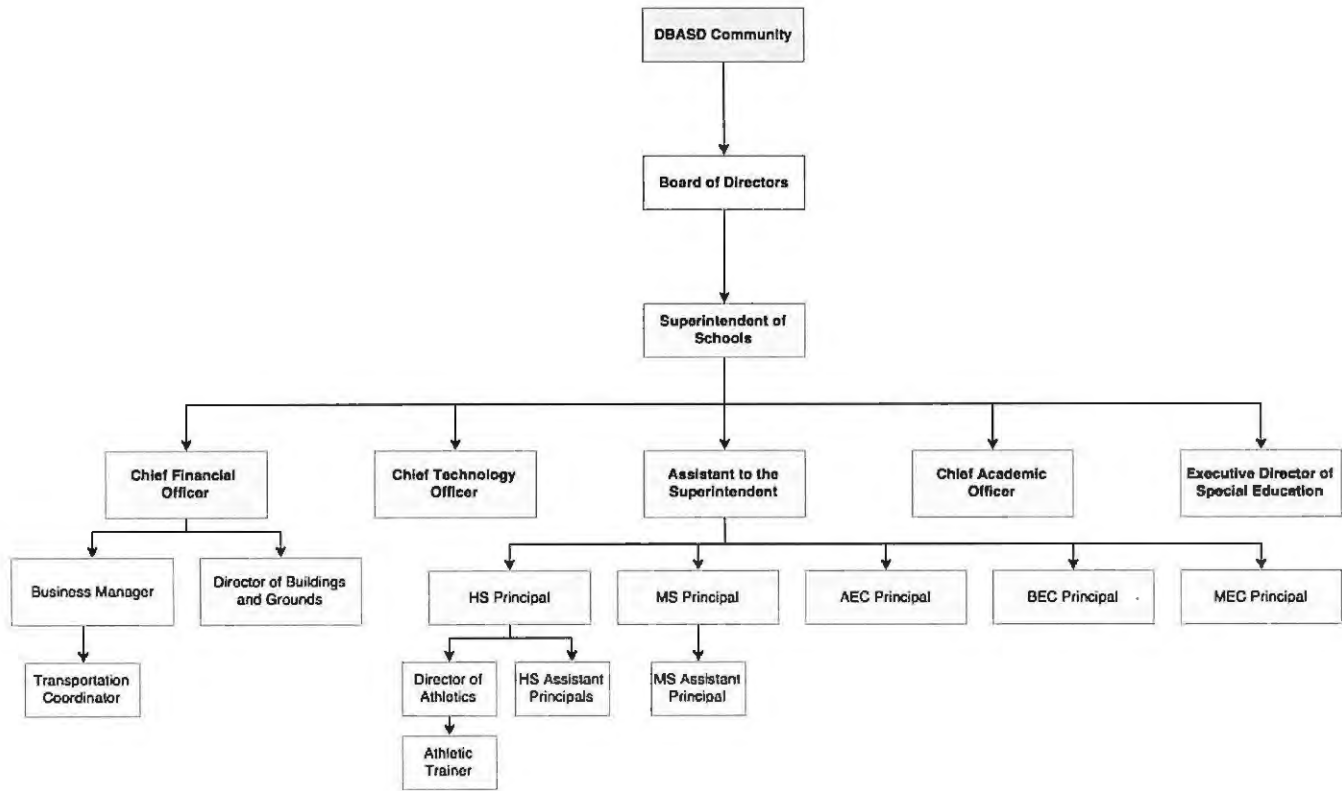
Ext :1163

\_\_\_\_\_  
Contact Person Telephone Number

(610)582-6215

\_\_\_\_\_  
Contact Person Fax Number





<u>Val Number</u>	<u>Description</u>	<u>Justification</u>
10245	NAG - Fund 10: Data has been entered for line 0147 - Due From Component Units. Identify the Component Unit.  NAG 0147, Fund 10: \$11,333.00	EDUCATION FOUNDATION
12201	REG - Fund 27: Current Year AFR Beginning Fund Balance must equal Prior Year AFR Ending Fund Balance. Justifications to this error must fully explain the situation that prompted a fund balance restatement. "Auditor Adjustment" is not a sufficient justification.  REG Fund 27, Beg Fund Bal: \$30,334.00 PY Ending Fund Balance: \$0.00	FUND 27 WAS CLOSED OUT AND ALL THE MONEY WAS TRANSFERED TO THE GF WE ACCOUNTED FOR IT INCORRECTLY, WE COMBINED IT WITH FUND 32 LAST YEAR.
12206	REG - Fund 32: Current Year AFR Beginning Fund Balance must equal Prior Year AFR Ending Fund Balance. Justifications to this error must fully explain the situation that prompted a fund balance restatement. "Auditor Adjustment" is not a sufficient justification.  REG Fund 32, Beg Fund Bal: \$921,797.00 PY Ending Fund Balance: \$952,130.00	THE FUND 27 WAS INCLUDED IN THE FUND 32 FUND BALANCE IN ERROR FOR 16-17 REPORTING THIS CORRECTS IT
30720	A large variance exists between federal revenues (8000's & 6830's) and federal expenditures reported in the General Fund. NOTE: IDEA pass thru, Medical Access, and QSCB/QZAB funded expenditures should be reported as federal expenditures. Correct data or enter a justification.  General Fund Federal Revenues: \$1,463,971.56 General Fund Federal Expenditures: \$4,976,944.12	THE EXPENDITURES ARE ACCESS EXPENSES WE TRY TO CLAIM AS MUCH AS WE CAN, HOWEVER WE DON'T GET REIMBURSED ENOUGH.
42420	Expenditure Detail: Total current year 2700-513 expenditure varies from prior year by 10%. Correct the data or enter a justification.  2700-513, AFR Exp Detail: \$3,184,705.98 2700-513, PY AFR Amount: \$2,797,264.41	RECLASSIFICATION OF ATHLETIC TRANSPORTATION INTO THE 2711 FUNCTION - USING SPECIAL COST CENTER TO BREAKOUT FROM OTHER TRANSPORTATON EXPENSES
50450	SESS - 2350 Legal and Accounting Services: SESS Schedule amounts for Special Education vary from prior year by 40% or more. Correct the data or enter a justification.  SESS Schedule 2350: \$21,435.40 Prior Year SESS Schedule 2350: \$44,553.64	LESS LEGAL SVCS FOR 17-18

Amounts Expressed in Whole Dollars	<u>General Fund</u> <u>(10)</u>	<u>Public Purpose Trust</u> <u>(27)</u>	<u>Other Compt Approved</u> <u>(28)</u>	<u>Athletic / Activity</u> <u>(29)</u>	<u>Capital Reserve (690.</u> <u>1850)</u> <u>(31)</u>
<b>Assets And Deferred Outflows Of Resources</b>					
<b>Assets</b>					
0100 Cash and Cash Equivalents	8,022,448			55,388	
0110 Investments	1,000,009				
0120 Taxes Receivable	1,103,327				
0130 Due From Other Funds	41,000				
0141 Due From Other Governments					
0142 State Revenue Receivable	2,113,005				
0143 Federal Revenue Receivable	603,052				
0145 Other Intergovernmental Revenue Receivable	392,861				
0146 Due from Primary Government					
0147 Due from Component Unit	11,333				
0150 Other Receivables	172,896				
0170 Inventories					
0180 Prepaid Expenses (Expenditures)	166,428				
0190 Other Current Assets					
<b>Total Assets</b>	<b>\$13,626,359</b>			<b>\$55,388</b>	
0910 Deferred Outflows of Resources					
<b>Total Assets And Deferred Outflows Of Resources</b>	<b>\$13,626,359</b>			<b>\$55,388</b>	

Amounts Expressed in Whole Dollars	<u>Capital Reserve (1431)</u> <u>(32)</u>	<u>Other Capital Projects</u> <u>Fund</u> <u>(39)</u>	<u>Debt Service</u> <u>(40)</u>	<u>Permanent</u> <u>(90)</u>	<u>Total Governmental</u> <u>Funds</u>
<b>Assets And Deferred Outflows Of Resources</b>					
<b>Assets</b>					
0100 Cash and Cash Equivalents	1,021,200				9,099,036
0110 Investments					1,000,009
0120 Taxes Receivable					1,103,327
0130 Due From Other Funds	1,753				42,753
0141 Due From Other Governments					
0142 State Revenue Receivable					2,113,005
0143 Federal Revenue Receivable					603,052
0145 Other Intergovernmental Revenue Receivable	61,850				454,711
0146 Due from Primary Government					
0147 Due from Component Unit					11,333
0150 Other Receivables					172,896
0170 Inventories					
0180 Prepaid Expenses (Expenditures)					166,428
0190 Other Current Assets					
<b>Total Assets</b>	<b>\$1,084,803</b>				<b>\$14,766,550</b>
0910 Deferred Outflows of Resources					
<b>Total Assets And Deferred Outflows Of Resources</b>	<b>\$1,084,803</b>				<b>\$14,766,550</b>

Amounts Expressed in Whole Dollars	<u>General Fund</u> <u>(10)</u>	<u>Public Purpose Trust</u> <u>(27)</u>	<u>Other Compt Approved</u> <u>(28)</u>	<u>Athletic / Activity</u> <u>(29)</u>	<u>Capital Reserve (690.</u> <u>1850)</u> <u>(31)</u>
<b>Liabilities And Deferred Inflows Of Resources And Fund Balances</b>					
<b>Liabilities</b>					
0400 Due to Other Funds	6,786			7,500	
0411 Due to Other Governments					
0412 Due to Primary Government					
0413 Due to Component Unit					
0420 Accounts Payable	912,577			1,373	
0430 Contracts Payable					
0440 Current Portion of Long-Term Debt					
0450 Short-Term Payables					
0461 Accrued Salaries and Benefits	2,814,036				
0462 Payroll Deductions and Withholding	2,071,533				
0480 Unearned Revenues	48,762				
0490 Other Current Liabilities	13,850			46,515	
<b>Total Liabilities</b>	<b>\$5,867,544</b>			<b>\$55,388</b>	
0950 Deferred Inflows of Resources	469,425				
<b>Fund Balances</b>					
0810 Nonspendable Fund Balance	166,428				
0820 Restricted Fund Balance					
0830 Committed Fund Balance					
0840 Assigned Fund Balance	3,472,952				
0850 Unassigned Fund Balance	3,650,010				
<b>Total Fund Balances</b>	<b>\$7,289,390</b>				
<b>Total Liabilities, Deferred Inflows Of Resources And Fund Balances</b>	<b>\$13,626,359</b>			<b>\$55,388</b>	



Amounts Expressed in Whole Dollars

	<u>Capital Reserve (1431)</u> <u>(32)</u>	<u>Other Capital Projects</u> <u>Fund</u> <u>(39)</u>	<u>Debt Service</u> <u>(40)</u>	<u>Permanent</u> <u>(90)</u>	<u>Total Governmental</u> <u>Funds</u>
<b>Liabilities And Deferred Inflows Of Resources And Fund Balances</b>					
<b>Liabilities</b>					
0400 Due to Other Funds					14,286
0411 Due to Other Governments					
0412 Due to Primary Government					
0413 Due to Component Unit					
0420 Accounts Payable	58,976				972,926
0430 Contracts Payable					
0440 Current Portion of Long-Term Debt					
0450 Short-Term Payables					
0461 Accrued Salaries and Benefits					2,814,036
0462 Payroll Deductions and Withholding					2,071,533
0480 Unearned Revenues					48,762
0490 Other Current Liabilities					60,365
<b>Total Liabilities</b>	<b>\$58,976</b>				<b>\$5,981,908</b>
0950 Deferred Inflows of Resources					469,425
<b>Fund Balances</b>					
0810 Nonspendable Fund Balance					166,428
0820 Restricted Fund Balance	1,025,827				1,025,827
0830 Committed Fund Balance					
0840 Assigned Fund Balance					3,472,952
0850 Unassigned Fund Balance					3,650,010
<b>Total Fund Balances</b>	<b>\$1,025,827</b>				<b>\$8,315,217</b>
<b>Total Liabilities, Deferred Inflows Of Resources And Fund Balances</b>	<b>\$1,084,803</b>				<b>\$14,766,550</b>

Amounts Expressed in Whole Dollars	<u>General Fund</u> <u>(10)</u>	<u>Public Purpose Trust</u> <u>(27)</u>	<u>Other Compt Approved</u> <u>(28)</u>	<u>Athletic / Activity</u> <u>(29)</u>	<u>Capital Reserve (690.</u> <u>1850)</u> <u>(31)</u>
<b>Revenues</b>					
6000 Revenue from Local Sources	36,625,962				
7000 Revenue from State Sources	18,906,622				
8000 Revenue from Federal Sources	870,519				
<b>Total Revenues</b>	<b>\$56,403,103</b>				
<b>Expenditures</b>					
1000 Instruction	33,110,056				
2000 Support Services	14,676,729		30,334		
3000 Operation of Non-Instructional Services	757,038				
4000 Facilities Acquisition, Construction and Improvement Services					
5110 Debt Service	4,939,949				
5130 Refund of Prior Year Revenues / Receipts	199,012				
<b>Total Expenditures</b>	<b>\$53,682,784</b>		<b>\$30,334</b>		
<b>Excess (Deficiency) Of Revenues Over Expenditures</b>	<b>\$2,720,319</b>		<b>(\$30,334)</b>		
<b>Other Financing Sources (Uses)</b>					
9110 Face Value of Bonds Issued					
9120 Proceeds from Refunding of Bonds	13,490,000				
9130 Bond Premiums	774,874				
9200 Proceeds from Extended-Term Financing					
9300 Interfund Transfers - IN					
9400 Sale of or Compensation for Loss of Fixed Assets	63,603				
9710 Transfers from Component Units					
9720 Transfers from Primary Governments					
9910 Other Financing Sources Not Listed in the 9000 Series					
9990 Insurance Recoveries					
5120 Debt Service – Refunded Bonds	14,091,272				
5150 Bond Discounts					
5200 Interfund Transfers – Out	813,603				
5300 Transfers Out to Component Units/Primary Governments					
<b>Total Other Financing Sources (Uses)</b>	<b>(\$576,398)</b>				

Amounts Expressed in Whole Dollars	<u>Capital Reserve (1431)</u> <u>(32)</u>	<u>Other Capital Projects</u> <u>Fund</u> <u>(39)</u>	<u>Debt Service</u> <u>(40)</u>	<u>Permanent</u> <u>(90)</u>	<u>Total Governmental</u> <u>Funds</u>
<b>Revenues</b>					
6000 Revenue from Local Sources	4,568				36,630,530
7000 Revenue from State Sources					18,906,622
8000 Revenue from Federal Sources					870,519
<b>Total Revenues</b>	<b>\$4,568</b>				<b>\$56,407,671</b>
<b>Expenditures</b>					
1000 Instruction					33,110,056
2000 Support Services	679,896				15,386,959
3000 Operation of Non-Instructional Services					757,038
4000 Facilities Acquisition, Construction and Improvement Services	34,245				34,245
5110 Debt Service					4,939,949
5130 Refund of Prior Year Revenues / Receipts					199,012
<b>Total Expenditures</b>	<b>\$714,141</b>				<b>\$54,427,259</b>
<b>Excess (Deficiency) Of Revenues Over Expenditures</b>	<b>(\$709,573)</b>				<b>\$1,980,412</b>
<b>Other Financing Sources (Uses)</b>					
9110 Face Value of Bonds Issued					13,490,000
9120 Proceeds from Refunding of Bonds					774,874
9130 Bond Premiums					813,603
9200 Proceeds from Extended-Term Financing					63,603
9300 Interfund Transfers - IN	813,603				813,603
9400 Sale of or Compensation for Loss of Fixed Assets					63,603
9710 Transfers from Component Units					
9720 Transfers from Primary Governments					
9910 Other Financing Sources Not Listed in the 9000 Series					
9990 Insurance Recoveries					
5120 Debt Service – Refunded Bonds					14,091,272
5150 Bond Discounts					
5200 Interfund Transfers – Out					813,603
5300 Transfers Out to Component Units/Primary Governments					
<b>Total Other Financing Sources (Uses)</b>	<b>\$813,603</b>				<b>\$237,205</b>

Amounts Expressed in Whole Dollars	<u>General Fund</u> <u>(10)</u>	<u>Public Purpose Trust</u> <u>(27)</u>	<u>Other Compt Approved</u> <u>(28)</u>	<u>Athletic / Activity</u> <u>(29)</u>	<u>Capital Reserve</u> <u>(690.</u> <u>1850)</u> <u>(31)</u>
<b>Special And Extraordinary Items</b>					
9920 Special Items – Gains					
9930 Extraordinary Items – Gains					
5520 Special Items – Losses					
5530 Extraordinary Items – Losses					
<b>Net Change In Fund Balances</b>	<b>\$2,143,921</b>	<b>(\$30,334)</b>			
<b>Fund Balance</b>					
0001 Fund Balance - Beginning of Fiscal Year	5,145,469	30,334			
<b>Fund Balance - End Of Year</b>	<b>\$7,289,390</b>				

Amounts Expressed in Whole Dollars	<u>Capital Reserve (1431)</u> <u>(32)</u>	<u>Other Capital Projects</u> <u>Fund</u> <u>(39)</u>	<u>Debt Service</u> <u>(40)</u>	<u>Permanent</u> <u>(90)</u>	<u>Total Governmental</u> <u>Funds</u>
<b>Special And Extraordinary Items</b>					
9920 Special Items – Gains					
9930 Extraordinary Items – Gains					
5520 Special Items – Losses					
5530 Extraordinary Items – Losses					
<b>Net Change In Fund Balances</b>	<b>\$104,030</b>				<b>\$2,217,617</b>
<b>Fund Balance</b>					
0001 Fund Balance - Beginning of Fiscal Year	921,797				6,097,600
<b>Fund Balance - End Of Year</b>	<b>\$1,025,827</b>				<b>\$8,315,217</b>

Amounts Expressed in Whole Dollars	<u>Food Service</u> (51)	<u>Child Care</u> <u>Operations</u> (52)	<u>Other Enterprise</u> (58)	<u>TOTAL</u>	<u>Internal Service</u> (60)
<b>Assets And Deferred Outflows Of Resources</b>					
<b>Current Assets</b>					
0100 Cash and Cash Equivalents	38,541			38,541	
0110 Investments					
0130 Due From Other Funds	5,033			5,033	
0141 Due From Other Governments	76,684			76,684	
0142 State Revenue Receivable					
0143 Federal Revenue Receivable					
0146 Due from Primary Government					
0147 Due from Component Unit					
0150 Other Receivables	137,300			137,300	
0170 Inventories					
0180 Prepaid Expenses (Expenditures)					
0190 Other Current Assets					
<b>Total Current Assets</b>	<b>\$257,558</b>			<b>\$257,558</b>	
<b>Noncurrent Assets</b>					
0211 Land					
0212 Site Improvements (Net)					
0220 Buildings and Building Improvements (Net)					
0230 Machinery, Equipment and Furniture (Net)	32,372			32,372	
0250 Construction in Progress					
0260 Long Term Prepayments					
0290 Other Noncurrent Assets					
<b>Total Noncurrent Assets</b>	<b>\$32,372</b>			<b>\$32,372</b>	
0910 Deferred Outflows of Resources					
<b>Total Assets And Deferred Outflows Of Resources</b>	<b>\$289,930</b>			<b>\$289,930</b>	

Amounts Expressed in Whole Dollars	<u>Food Service</u> <u>(51)</u>	<u>Child Care</u> <u>Operations</u> <u>(52)</u>	<u>Other Enterprise</u> <u>(58)</u>	<u>TOTAL</u>	<u>Internal Service</u> <u>(60)</u>
<b>Liabilities And Deferred Inflows Of Resources And Net Position</b>					
<b>Current Liabilities</b>					
0400 Due to Other Funds	33,500			33,500	
0411 Due to Other Governments					
0413 Due to Component Unit					
0420 Accounts Payable	2,024			2,024	
0430 Contracts Payable					
0440 Current Portion of Long-Term Debt					
0450 Short-Term Payables					
0461 Accrued Salaries and Benefits					
0462 Payroll Deductions and Withholding					
0480 Unearned Revenues	30,641			30,641	
0490 Other Current Liabilities					
<b>Total Current Liabilities</b>	<b>\$66,165</b>			<b>\$66,165</b>	
<b>Noncurrent Liabilities</b>					
0510 Bonds Payable					
0520 Extended-Term Financing Agreements Payable					
0530 Lease-Purchase Obligations					
0540 Accumulated Compensated Absences					
0550 Authority Lease Obligations					
0560 Other Post-Employment Benefits (OPEB)					
0570 Net Pension Liability					
0599 Other Noncurrent Liabilities					
<b>Total Noncurrent Liabilities</b>					
<b>Total Liabilities</b>	<b>\$66,165</b>			<b>\$66,165</b>	
0950 Deferred Inflows of Resources					
<b>Net Position</b>					
0791 Net Investment in Capital Assets	32,372			32,372	
0008 Restricted Net Position (0792 – 0798)					
0799 Unrestricted Net Position	191,393			191,393	
<b>Total Net Position</b>	<b>\$223,765</b>			<b>\$223,765</b>	
<b>Total Liabilities And Deferred Inflows Of Resources And Net Position</b>	<b>\$289,930</b>			<b>\$289,930</b>	

Amounts Expressed in Whole Dollars	<u>Food Service</u> <u>(51)</u>	<u>Child Care Operations</u> <u>(52)</u>	<u>Other Enterprise</u> <u>(58)</u>	<u>TOTAL</u>	<u>Internal Service</u> <u>(60)</u>
<b>Operating Revenues</b>					
6600 Food Service Revenue	761,620			761,620	
0071 Charges for Services					
0072 Other Operating Revenue					
<b>Total Operating Revenues</b>	<b>\$761,620</b>			<b>\$761,620</b>	
<b>Operating Expenses</b>					
100 Personnel Services – Salaries					
200 Personnel Services – Employee Benefits					
300 Purchased Professional and Technical Services	122			122	
400 Purchased Property Services	3,187			3,187	
500 Other Purchased Services	1,097,327			1,097,327	
600 Supplies	80,953			80,953	
740 Depreciation	11,064			11,064	
810 Dues and Fees					
890 Miscellaneous Expenditures	11,449			11,449	
<b>Total Operating Expenses</b>	<b>\$1,204,102</b>			<b>\$1,204,102</b>	
<b>Operating Income (Loss)</b>	<b>(\$442,482)</b>			<b>(\$442,482)</b>	
<b>Non Operating Revenues (Expenses)</b>					
6500 Earnings on Investments	1,725			1,725	
6920 Contributions and Donations from Private Sources					
6930 Gains or Losses on Sale of Fixed Assets					
6991 Refunds of a Prior Year Expenditure					
7000 Revenue from State Sources	31,551			31,551	
8000 Revenue from Federal Sources	535,164			535,164	
820 Claims and Judgments Against the LEA					
830 Interest					
<b>TOTAL Non Operating Revenues (Expenses)</b>	<b>\$568,440</b>			<b>\$568,440</b>	
<b>Income (Loss) Before Contributions And Transfers</b>	<b>\$125,958</b>			<b>\$125,958</b>	



Amounts Expressed in Whole Dollars	<u>Food Service</u> <u>(51)</u>	<u>Child Care Operations</u> <u>(52)</u>	<u>Other Enterprise</u> <u>(58)</u>	<u>TOTAL</u>	<u>Internal Service</u> <u>(60)</u>
<b>Contributions, Transfers, and Special and Extraordinary Items</b>					
5200 Interfund Transfers – Out					
5300 Transfers Out to Component Units/Primary Governments					
5520 Special Items – Losses					
5530 Extraordinary Items – Losses					
9300 Interfund Transfers - IN					
9500 Capital Contributions					
9700 Transfers IN From Component Units/Primary Governments					
9920 Special Items – Gains					
9930 Extraordinary Items – Gains					
<b>Change In Net Position</b>	<b>\$125,958</b>			<b>\$125,958</b>	
0002 Net Position - Beginning of Fiscal Year	97,807			97,807	
0003 Accounting Changes / Residual Equity Transfers					
<b>Net Position - End Of Year</b>	<b>\$223,765</b>			<b>\$223,765</b>	

Amounts Expressed in Whole Dollars	<u>Food Service</u> (51)	<u>Child Care Operations</u> (52)	<u>Other Enterprise</u> (58)	<u>TOTAL</u>	<u>Internal Service(60)</u>
<b>Cash Flows From Operating Activities</b>					
0011 Cash Receipts From Users	761,494			761,494	
0012 Cash Receipts From Assessments Made to Other Funds					
0013 Cash Receipts From Earnings on Investments					
0014 Cash Receipts From Other Operating Revenue					
0015 Cash Payments To Employees For Services					
0016 Cash Payments For Insurance Claims					
0017 Cash Payments To Suppliers For Goods and Services	1,792,834			1,792,834	
0018 Cash Payments For Other Operating Expenses					
<b>Net Cash Provided By (Used For) Operating Activities</b>	<b>(\$1,031,340)</b>			<b>(\$1,031,340)</b>	
<b>Cash Flows From Non-Capital Financing Activities</b>					
0021 Receipts From Local Sources - 6000					
0022 Receipts From State Sources - 7000	31,133			31,133	
0023 Receipts From Federal Sources -8000	450,894			450,894	
0024 Notes and Loans Received (Repaid)					
0025 Interest Paid on Notes/Loans - 5100-830					
0026 Operating Transfers In (Out)/Residual Equity Trans					
0027 Operating Transfers In (Out) Primary Government / Comp Unit					
0028 Receipts From Refund of Prior Year Expenditures - 6991					
0029 Special and Extraordinary Gains (losses)					
0030 Receipts from Insurance Recoveries -9990					
<b>Net Cash Prov By (Used for) Non-Capital Financing Activities</b>	<b>\$482,027</b>			<b>\$482,027</b>	
<b>Cash Flows From Capital and Related Financing Activities</b>					
0031 Payments For Fac Acq, Const, and Imp - 4000					
0032 Gain / (Loss) on Sale of Fixed Assets - 6930					
0033 Proceeds From Extended Term Financing - 9200					
0034 Principal Paid on Financing Agreements					
0035 Interest Paid on Financing Agreements - 5100-830					
0036 (Inc) Dec in Contributed Capital					
<b>Net Cash Prov By (Used for) Capital and Related Financing Activities</b>					
<b>Cash Flows From Investing Activities</b>					
0041 Earnings on Investments - 6500	1,725			1,725	
0042 Purchase of Inv Securities / Deposits to Inv Pools					
0043 Receipts From Investment Pool Withdrawals					
0044 Proceeds from Sale and Maturity of Inv Securities					

LEA : 114061503 Daniel Boone Area SD

Printed 1/4/2019 3:56:21 PM

0045 Loans Received (Paid)

**Net Cash Prov By (Used for) Investing Activities**

**\$1,725**

**\$1,725**

	<u>Food Service</u> <u>(51)</u>	<u>Child Care Operations</u> <u>(52)</u>	<u>Other Enterprise</u> <u>(58)</u>	<u>TOTAL</u>	<u>Internal Service</u> <u>(60)</u>
<b>Net Increase (Decrease) in Cash Flows</b>	<b>(547,588)</b>			<b>(547,588)</b>	
0004 Cash and Cash Equivalents Beginning of Year	586,129			586,129	
<b>Cash and Cash Equivalents at Year End</b>	<b>\$38,541</b>			<b>\$38,541</b>	
<hr/>					
<b>Reconciliation of Operating Income (Loss) To Net Cash Provided by (Used For) Operating Activities</b>					
0005 Operating Income (Loss) per REP	(442,482)			(442,482)	
<b>Adjustments</b>					
0051 Depreciation and Net Amortization	11,064			11,064	
0052 Provision for Uncollectible Accounts					
0053 Other Adjustments					
<b>Effect of Changes in Assets, Liabilities, Deferred Outflows and Deferred Inflows</b>					
0054 (Inc) Dec In Accounts Receivable (0120-0150)	(132,413)			(132,413)	
0055 Advances to Other Funds (0160)					
0056 (Inc) Dec in Inventories (0170)	76,396			76,396	
0057 (Inc) Dec in Prepaid Expenses (0180)					
0058 (Inc) Dec in Other Current or Noncurrent Assets					
0064 Deferred Outflows (0910)					
0059 Inc (Dec) in Accounts Payable (0400-0450)	(34,102)			(34,102)	
0060 Inc (Dec) in Accrued Salaries/Benefits (0461)					
0065 Inc (Dec) in Net Pension Liabilities (0570)					
0066 Inc (Dec) in Other Postemp Benefit Oblig (0560)					
0061 Inc (Dec) in Payroll Deductions/Withholding (0462)					
0062 Inc (Dec) in Unearned Revenue (0480)	(126)			(126)	
0063 Inc (Dec) in Other Current or Noncurrent Liabilities	(509,677)			(509,677)	
0067 Deferred Inflows (0950)					
<b>Total Adjustments</b>	<b>(\$588,858)</b>			<b>(\$588,858)</b>	
<b>Cash Provided By (Used for) Total</b>	<b>(\$1,031,340)</b>			<b>(\$1,031,340)</b>	

COMBINED STATEMENT OF CASH FLOWS  
SCHEDULE OF NONCASH INVESTING, CAPITAL, AND FINANCING ACTIVITIES

Explanation of Transaction and Balance Sheet Effect	Amount
<b>Total</b>	

LEA : 114061503 Daniel Boone Area SD

Printed 1/4/2019 3:56:22 PM

Amounts Expressed in Whole Dollars	<u>Private Purpose Trust</u> <u>(71)</u>	<u>Investment Trust</u> <u>(72)</u>	<u>Pension Trust</u> <u>(73)</u>	<u>Activity</u> <u>(81)</u>
<b>Assets And Deferred Outflows Of Resources</b>				
<b>Assets</b>				
0100 Cash and Cash Equivalents	23,436			302,606
0110 Investments				
0130 Due From Other Funds				
0147 Due from Component Unit				
0150 Other Receivables				170
0170 Inventories				
0180 Prepaid Expenses (Expenditures)				
0190 Other Current Assets				
0220 Buildings and Building Improvements (Net)				
0230 Machinery, Equipment and Furniture (Net)				
<b>Total Assets</b>	<b>\$23,436</b>			<b>\$302,776</b>
0910 Deferred Outflows of Resources				
<b>Total Assets And Deferred Outflows Of Resources</b>	<b>\$23,436</b>			<b>\$302,776</b>

LEA : 114061503 Daniel Boone Area SD

Printed 1/4/2019 3:56:22 PM

Amounts Expressed in Whole Dollars

	<u>Other Agency</u> <u>(89)</u>	<u>Discrete Component Units</u> <u>(98)</u>	<u>Discrete Component Units</u> <u>(99)</u>	<u>Total Fiduciary Funds</u>
<b>Assets And Deferred Outflows Of Resources</b>				
<b>Assets</b>				
0100 Cash and Cash Equivalents				326,042
0110 Investments				
0130 Due From Other Funds				
0147 Due from Component Unit				
0150 Other Receivables				170
0170 Inventories				
0180 Prepaid Expenses (Expenditures)				
0190 Other Current Assets				
0220 Buildings and Building Improvements (Net)				
0230 Machinery, Equipment and Furniture (Net)				
<b>Total Assets</b>				<b>\$326,212</b>
0910 Deferred Outflows of Resources				
<b>Total Assets And Deferred Outflows Of Resources</b>				<b>\$326,212</b>

LEA : 114061503 Daniel Boone Area SD

Printed 1/4/2019 3:56:22 PM

Amounts Expressed in Whole Dollars	<u>Private Purpose Trust</u> (71)	<u>Investment Trust</u> (72)	<u>Pension Trust</u> (73)	<u>Activity</u> (81)
<b>Liabilities, Deferred Inflows Of Resources And Net Position</b>				
<b>Liabilities</b>				
0400 Due to Other Funds				
0411 Due to Other Governments				
0412 Due to Primary Government				
0413 Due to Component Unit				
0420 Accounts Payable				3,120
0430 Contracts Payable				
0450 Short-Term Payables				
0461 Accrued Salaries and Benefits				
0462 Payroll Deductions and Withholding				
0480 Unearned Revenues				
0490 Other Current Liabilities				299,656
<b>Total Liabilities</b>				<b>\$302,776</b>
0950 Deferred Inflows of Resources				
<b>Net Position</b>				
0791 Net Investment in Capital Assets				
0009 Restricted Net Position (0792 – 0798)	23,436			
0799 Unrestricted Net Position				
<b>Total Net Position</b>	<b>\$23,436</b>			
<b>Total Liabilities, Deferred Inflows Of Resources And Net Position</b>	<b>\$23,436</b>			<b>\$302,776</b>



LEA : 114061503 Daniel Boone Area SD

Printed 1/4/2019 3:56:22 PM

Amounts Expressed in Whole Dollars

	<u>Other Agency</u> <u>(89)</u>	<u>Discrete Component Units</u> <u>(98)</u>	<u>Discrete Component Units</u> <u>(99)</u>	<u>Total Fiduciary Funds</u>
<b>Liabilities, Deferred Inflows Of Resources And Net Position</b>				
<b>Liabilities</b>				
0400 Due to Other Funds				
0411 Due to Other Governments				
0412 Due to Primary Government				
0413 Due to Component Unit				
0420 Accounts Payable				3,120
0430 Contracts Payable				
0450 Short-Term Payables				
0461 Accrued Salaries and Benefits				
0462 Payroll Deductions and Withholding				
0480 Unearned Revenues				
0490 Other Current Liabilities				299,656
<b>Total Liabilities</b>				<b>\$302,776</b>
0950 Deferred Inflows of Resources				
<b>Net Position</b>				
0791 Net Investment in Capital Assets				
0009 Restricted Net Position (0792 – 0798)				23,436
0799 Unrestricted Net Position				
<b>Total Net Position</b>				<b>\$23,436</b>
<b>Total Liabilities, Deferred Inflows Of Resources And Net Position</b>				<b>\$326,212</b>

Amounts Expressed in Whole Dollars	<u>Private Purpose Trust</u> <u>(71)</u>	<u>Investment Trust</u> <u>(72)</u>	<u>Pension Trust</u> <u>(73)</u>	<u>Discrete Component</u> <u>Units</u> <u>(98)</u>	<u>Discrete Component</u> <u>Units</u> <u>(99)</u>	<u>Total Fiduciary</u> <u>Funds</u>
<b>Additions</b>						
0091 Gifts and Contributions	939					939
0092 Other Additions	94					94
<b>Deductions</b>						
0093 Scholarships Awarded	6,044					6,044
0094 Other Deductions						
<b>Change In Net Position</b>	<b>(\$5,011)</b>					<b>(\$5,011)</b>
0006 Net Position – Beginning of Fiscal Year	28,447					28,447
0007 Net Position Held in Trust for Pension Benefits						
<b>Net Position - End of Fiscal Year</b>	<b>\$23,436</b>					<b>\$23,436</b>

	<u>Revenue Reported In Current Year</u>	<u>Current Year Tax Accrual</u>	<u>Prior Year Tax Accrual</u>	<u>Taxes Collected In Current Year</u>
<b><u>Revenue from Local Sources</u></b>				
6111 Current Real Estate Taxes	30,430,255.36			30,430,255.36
6112 Interim Real Estate Taxes	236,478.60			236,478.60
6113 Public Utility Realty Taxes	33,913.79			33,913.79
6114 Payments in Lieu of Current Taxes - State / Local	5,191.17			5,191.17
6120 Current Per Capita Taxes, Section 679	52,278.00			52,278.00
6141 Current Act 511 Per Capita Taxes	51,780.90			51,780.90
6151 Current Act 511 Earned Income Taxes	3,190,652.43			3,190,652.43
6153 Current Act 511 Real Estate Transfer Taxes	607,152.01			607,152.01
6411 Delinquent Real Estate Taxes	820,105.27			820,105.27
6420 Delinquent Per Capita Taxes, Section 679	13,450.78			13,450.78
6440 Delinquent Local Enabling Taxes - Flat Rate Assessments	14,079.95			14,079.95
6500 Earnings on Investments	183,253.67			
6700 Revenues from LEA Activities	127,139.00			
6831 Federal Revenue Received from Other Pennsylvania Public LEAs	4,500.00			
6832 Federal IDEA Revenue Received as Pass Through	588,953.00			
6910 Rentals	62,383.65			
6920 Contributions and Donations from Private Sources	89,007.04			
6941 Regular Day School Tuition	42,638.40			
6942 Summer School Tuition	3,363.00			
6991 Refunds of a Prior Year Expenditure	550.54			
6999 Other Revenues Not Specified Above	68,835.17			
<b>TOTAL Revenue from Local Sources</b>	<b>\$36,625,961.73</b>			<b>\$35,455,338.26</b>

**Revenue Reported  
In Current Year**

**Revenue from State Sources**

7110 Basic Education Funding	8,519,236.20
7160 Tuition for Orphans Subsidy	127,886.82
7271 Special Education funds for School-Aged Pupils	1,589,770.25
7299 Program Revenues Not Listed Previously in the 7200 Series	5,333.09
7311 Pupil Transportation Subsidy	1,363,017.00
7312 Nonpublic and Charter School Pupil Transportation Subsidy	142,835.00
7320 Rental and Sinking Fund Payments / Building Reimbursement Subsidy	566,822.91
7330 Health Services (Medical, Dental, Nurse, Act 25)	63,745.04
7340 State Property Tax Reduction Allocation	1,189,300.84
7360 Safe Schools	24,999.99
7505 Ready to Learn Block Grant	489,146.00
7810 State Share of Social Security and Medicare Taxes	777,192.49
7820 State Share of Retirement Contributions	4,047,336.31
<b>TOTAL Revenue from State Sources</b>	<b>\$18,906,621.94</b>

**Revenue Reported  
In Current Year**

**Revenue from Federal Sources**

8514 NCLB, Title I - Improving the Academic Achievement of the Disadvantaged	338,209.47
8515 NCLB, Title II - Preparing, Training and Recruiting High Quality Teachers and Principals	85,970.00
8517 NCLB, Title IV - 21St Century Schools	10,000.00
8810 School-Based Access Medicaid Reimbursement Program (SBAP) Reimbursements (Access)	427,546.13
8820 Medical Assistance Reimbursement for Administrative Claiming (Quarterly) Program	8,792.96
<b>TOTAL Revenue from Federal Sources</b>	<b>\$870,518.56</b>

	<b>Revenue Reported In Current Year</b>	
<b><u>Other Financing Sources</u></b>		
9120 Proceeds from Refunding of Bonds	13,490,000.00	
9130 Bond Premiums	774,874.00	
9400 Sale of or Compensation for Loss of Fixed Assets	63,603.00	
<b>TOTAL Other Financing Sources</b>	<b>\$14,328,477.00</b>	
<b>TOTAL FROM ALL SOURCES</b>	<b>\$70,731,579.23</b>	<b>\$35,455,338.26</b>

Revenue from Local Sources	36,625,961.73
Revenue from State Sources	18,906,621.94
Revenue from Federal Sources	870,518.56
Other Financing Sources	14,328,477.00
<b>TOTAL FROM ALL SOURCES</b>	<b>\$70,731,579.23</b>

**General Fund (10)**

	<u>Total</u>
<b>1000 Instruction</b>	
<b>100 Personnel Services – Salaries</b>	
100 Personnel Services – Salaries	17,587,416.01
<b>Total Personnel Services – Salaries</b>	<b>\$17,587,416.01</b>
<b>200 Personnel Services – Employee Benefits</b>	
210 Group Insurance – Contracted Provider	3,249,582.29
220 Social Security Contributions	1,300,686.77
230 PSERS Retirement Contributions	5,610,712.49
250 Unemployment Compensation	2,149.95
260 Workers’ Compensation	118,972.00
299 All Other Employee Benefits	1,102.50
<b>Total Personnel Services – Employee Benefits</b>	<b>\$10,283,206.00</b>
<b>300 Purchased Professional and Technical Services</b>	
322 Professional Educational Services – Ius	453,819.33
329 Professional Educational Services – Other	267,787.62
330 Other Professional Services	186,618.40
340 Technical Services	48.50
390 Other Purchased Professional and Technical Services	250.00
<b>Total Purchased Professional and Technical Services</b>	<b>\$908,523.85</b>
<b>400 Purchased Property Services</b>	
430 Repairs and Maintenance Services	4,946.80
440 Rentals	89,224.00
<b>Total Purchased Property Services</b>	<b>\$94,170.80</b>
<b>500 Other Purchased Services</b>	
510 Student Transportation Services	5,480.81
530 Communications	20,055.23
550 Printing and Binding	1,462.25
561 Tuition To Other School Districts Within the State	245,336.29
562 Tuition To Pennsylvania Charter Schools	1,173,179.20
563 Tuition To Nonpublic Schools	1,136,505.56
564 Tuition To Career and Technology Centers	1,037,709.60
567 Tuition To Approved Private Schools (APS) and PA Chartered Schools for the Deaf and Blind	264,223.96
568 Tuition To Private Residential Rehabilitative Institutions (PRRI) [In-State] and Detention Centers	30,685.36
569 Tuition – Other	1,533.50
580 Travel	9,091.29
594 IU Payment By Withholding for Institutionalized Children’s Programs – Special Classes	600.00
<b>Total Other Purchased Services</b>	<b>\$3,925,863.05</b>
<b>600 Supplies</b>	
610 General Supplies	199,553.37
640 Books and Periodicals	49,557.67
650 Supplies & Fees – Technology Related	21,840.40
<b>Total Supplies</b>	<b>\$270,951.44</b>
<b>700 Property</b>	
752 Capital Equipment – Original and Additional	10,251.36



LEA : 114061503 Daniel Boone Area SD

Printed 1/4/2019 3:56:26 PM

**General Fund (10)**

<b>1000 Instruction</b>	<b><u>Total</u></b>
<b>700 <u>Property</u></b>	
758 Capitalized Technology Software - Original	1,924.00
<b>Total Property</b>	<b>\$12,175.36</b>
<b>800 <u>Other Objects</u></b>	
810 Dues and Fees	27,749.96
<b>Total Other Objects</b>	<b>\$27,749.96</b>
<b>Total 1000 Instruction</b>	<b>\$33,110,056.47</b>

**General Fund (10)**

1100 Regular Programs – Elementary / Secondary	<u>Elementary</u>	<u>Secondary</u>	<u>Federal</u>	<u>Total</u>
<b>100 Personnel Services – Salaries</b>				
100 Personnel Services – Salaries	9,357,562.43	4,271,858.24	309,660.97	13,939,081.64
<b>Total Personnel Services – Salaries</b>	<b>\$9,357,562.43</b>	<b>\$4,271,858.24</b>	<b>\$309,660.97</b>	<b>\$13,939,081.64</b>
<b>200 Personnel Services – Employee Benefits</b>				
210 Group Insurance – Contracted Provider	1,802,910.11	722,391.57	9,221.31	2,534,522.99
220 Social Security Contributions	702,749.42	318,410.87	12,953.94	1,034,114.23
230 PSERS Retirement Contributions	2,991,431.54	1,374,950.34	56,058.38	4,422,440.26
250 Unemployment Compensation	466.51	1,579.77		2,046.28
260 Workers' Compensation	78,747.57	40,224.43		118,972.00
299 All Other Employee Benefits	700.00	302.50		1,002.50
<b>Total Personnel Services – Employee Benefits</b>	<b>\$5,577,005.15</b>	<b>\$2,457,859.48</b>	<b>\$78,233.63</b>	<b>\$8,113,098.26</b>
<b>300 Purchased Professional and Technical Services</b>				
322 Professional Educational Services – Ius	6,689.65	3,464.02		10,153.67
329 Professional Educational Services – Other	149,337.53	79,351.99		228,689.52
330 Other Professional Services	22,495.80	(4,173.00)	13,895.46	32,218.26
390 Other Purchased Professional and Technical Services		250.00		250.00
<b>Total Purchased Professional and Technical Services</b>	<b>\$178,522.98</b>	<b>\$78,893.01</b>	<b>\$13,895.46</b>	<b>\$271,311.45</b>
<b>400 Purchased Property Services</b>				
430 Repairs and Maintenance Services	1,290.00	2,681.80		3,971.80
440 Rentals	59,935.87	29,288.13		89,224.00
<b>Total Purchased Property Services</b>	<b>\$61,225.87</b>	<b>\$31,969.93</b>		<b>\$93,195.80</b>
<b>500 Other Purchased Services</b>				
510 Student Transportation Services	5,663.69	(1,711.58)		3,952.11
530 Communications	10,157.52	5,774.08		15,931.60
550 Printing and Binding		1,462.25		1,462.25
561 Tuition To Other School Districts Within the State	42,329.17	93,830.75		136,159.92
562 Tuition To Pennsylvania Charter Schools	394,604.67	466,893.89		861,498.56
563 Tuition To Nonpublic Schools	44,935.01	103,589.57		148,524.58
568 Tuition To Private Residential Rehabilitative Institutions (PRRI) [In-State] and Detention Centers	14,880.68	15,804.68		30,685.36
580 Travel	5,586.37	2,529.10		8,115.47
<b>Total Other Purchased Services</b>	<b>\$518,157.11</b>	<b>\$688,172.74</b>		<b>\$1,206,329.85</b>
<b>600 Supplies</b>				
610 General Supplies	112,040.60	78,336.53	1,464.31	191,841.44
640 Books and Periodicals	21,020.57	16,477.84	7,074.26	44,572.67
650 Supplies & Fees – Technology Related	8,989.60	6,455.80	1,900.00	17,345.40
<b>Total Supplies</b>	<b>\$142,050.77</b>	<b>\$101,270.17</b>	<b>\$10,438.57</b>	<b>\$253,759.51</b>
<b>700 Property</b>				
752 Capital Equipment – Original and Additional			10,251.36	10,251.36
758 Capitalized Technology Software - Original		1,924.00		1,924.00
<b>Total Property</b>		<b>\$1,924.00</b>	<b>\$10,251.36</b>	<b>\$12,175.36</b>
<b>800 Other Objects</b>				

General Fund (10)

	<u>Elementary</u>	<u>Secondary</u>	<u>Federal</u>	<u>Total</u>
<b>1100 Regular Programs – Elementary / Secondary</b>				
<b>800 Other Objects</b>				
810 Dues and Fees	84.00	4,671.16		4,755.16
<b>Total Other Objects</b>	<b>\$84.00</b>	<b>\$4,671.16</b>		<b>\$4,755.16</b>
<b>Total 1100 Regular Programs – Elementary / Secondary</b>	<b>\$15,834,608.31</b>	<b>\$7,636,618.73</b>	<b>\$422,479.99</b>	<b>\$23,893,707.03</b>

**General Fund (10)**

	<u>Elementary</u>	<u>Secondary</u>	<u>Federal</u>	<u>Total</u>
<b>1110 Regular Programs</b>				
<b>100 Personnel Services – Salaries</b>				
100 Personnel Services – Salaries	9,357,562.43	4,271,858.24	309,660.97	13,939,081.64
<b>Total Personnel Services – Salaries</b>	<b>\$9,357,562.43</b>	<b>\$4,271,858.24</b>	<b>\$309,660.97</b>	<b>\$13,939,081.64</b>
<b>200 Personnel Services – Employee Benefits</b>				
210 Group Insurance – Contracted Provider	1,802,910.11	722,391.57	9,221.31	2,534,522.99
220 Social Security Contributions	702,749.42	318,410.87	12,953.94	1,034,114.23
230 PSERS Retirement Contributions	2,991,431.54	1,374,950.34	56,058.38	4,422,440.26
250 Unemployment Compensation	466.51	1,579.77		2,046.28
260 Workers' Compensation	78,747.57	40,224.43		118,972.00
299 All Other Employee Benefits	700.00	302.50		1,002.50
<b>Total Personnel Services – Employee Benefits</b>	<b>\$5,577,005.15</b>	<b>\$2,457,859.48</b>	<b>\$78,233.63</b>	<b>\$8,113,098.26</b>
<b>300 Purchased Professional and Technical Services</b>				
322 Professional Educational Services – Ius	6,689.65	3,464.02		10,153.67
329 Professional Educational Services – Other	149,337.53	79,351.99		228,689.52
330 Other Professional Services	22,495.80	(4,173.00)	13,895.46	32,218.26
390 Other Purchased Professional and Technical Services		250.00		250.00
<b>Total Purchased Professional and Technical Services</b>	<b>\$178,522.98</b>	<b>\$78,893.01</b>	<b>\$13,895.46</b>	<b>\$271,311.45</b>
<b>400 Purchased Property Services</b>				
430 Repairs and Maintenance Services	1,290.00	2,681.80		3,971.80
440 Rentals	59,935.87	29,288.13		89,224.00
<b>Total Purchased Property Services</b>	<b>\$61,225.87</b>	<b>\$31,969.93</b>		<b>\$93,195.80</b>
<b>500 Other Purchased Services</b>				
510 Student Transportation Services	5,663.69	(1,711.58)		3,952.11
530 Communications	10,157.52	5,774.08		15,931.60
550 Printing and Binding		1,462.25		1,462.25
561 Tuition To Other School Districts Within the State	42,329.17	93,830.75		136,159.92
562 Tuition To Pennsylvania Charter Schools	394,604.67	466,893.89		861,498.56
563 Tuition To Nonpublic Schools	44,935.01	103,589.57		148,524.58
568 Tuition To Private Residential Rehabilitative Institutions (PRRI) [In-State] and Detention Centers	14,880.68	15,804.68		30,685.36
580 Travel	5,586.37	2,529.10		8,115.47
<b>Total Other Purchased Services</b>	<b>\$518,157.11</b>	<b>\$688,172.74</b>		<b>\$1,206,329.85</b>
<b>600 Supplies</b>				
610 General Supplies	112,040.60	78,336.53	1,464.31	191,841.44
640 Books and Periodicals	21,020.57	16,477.84	7,074.26	44,572.67
650 Supplies & Fees – Technology Related	8,989.60	6,455.80	1,900.00	17,345.40
<b>Total Supplies</b>	<b>\$142,050.77</b>	<b>\$101,270.17</b>	<b>\$10,438.57</b>	<b>\$253,759.51</b>
<b>700 Property</b>				
752 Capital Equipment – Original and Additional			10,251.36	10,251.36
758 Capitalized Technology Software - Original		1,924.00		1,924.00
<b>Total Property</b>		<b>\$1,924.00</b>	<b>\$10,251.36</b>	<b>\$12,175.36</b>
<b>800 Other Objects</b>				

LEA : 114061503 Daniel Boone Area SD

Printed 1/4/2019 3:56:26 PM

General Fund (10)

1110 Regular Programs

800 Other Objects

810 Dues and Fees

Total Other Objects

Total 1110 Regular Programs

	<u>Elementary</u>	<u>Secondary</u>	<u>Federal</u>	<u>Total</u>
	84.00	4,671.16		4,755.16
	<b>\$84.00</b>	<b>\$4,671.16</b>		<b>\$4,755.16</b>
	<b>\$15,834,608.31</b>	<b>\$7,636,618.73</b>	<b>\$422,479.99</b>	<b>\$23,893,707.03</b>

**General Fund (10)**

**1200 Special Programs – Elementary / Secondary**

	<u>Elementary</u>	<u>Secondary</u>	<u>Federal</u>	<u>Total</u>
<b>100 Personnel Services – Salaries</b>				
100 Personnel Services – Salaries	1,160,225.74	473,953.46	1,896,609.11	3,530,788.31
<b>Total Personnel Services – Salaries</b>	<b>\$1,160,225.74</b>	<b>\$473,953.46</b>	<b>\$1,896,609.11</b>	<b>\$3,530,788.31</b>
<b>200 Personnel Services – Employee Benefits</b>				
210 Group Insurance – Contracted Provider	388,619.75	159,630.00	166,809.55	715,059.30
220 Social Security Contributions	99,418.73	37,621.81	121,113.39	258,153.93
230 PSERS Retirement Contributions	439,457.30	167,285.79	543,244.42	1,149,987.51
250 Unemployment Compensation	51.83	51.84		103.67
299 All Other Employee Benefits		100.00		100.00
<b>Total Personnel Services – Employee Benefits</b>	<b>\$927,547.61</b>	<b>\$364,689.44</b>	<b>\$831,167.36</b>	<b>\$2,123,404.41</b>
<b>300 Purchased Professional and Technical Services</b>				
322 Professional Educational Services – lus	46,205.57	38,035.65	359,424.44	443,665.66
329 Professional Educational Services – Other	29,575.24	6,847.86	2,675.00	39,098.10
330 Other Professional Services	9,759.29	1,088.10	123,389.75	134,237.14
340 Technical Services	32.10	16.40		48.50
<b>Total Purchased Professional and Technical Services</b>	<b>\$85,572.20</b>	<b>\$45,988.01</b>	<b>\$485,489.19</b>	<b>\$617,049.40</b>
<b>400 Purchased Property Services</b>				
430 Repairs and Maintenance Services			975.00	975.00
<b>Total Purchased Property Services</b>			<b>\$975.00</b>	<b>\$975.00</b>
<b>500 Other Purchased Services</b>				
510 Student Transportation Services	1,292.50	236.20		1,528.70
530 Communications	1,320.00	2,803.63		4,123.63
561 Tuition To Other School Districts Within the State	44,067.38	19,541.83	45,567.16	109,176.37
562 Tuition To Pennsylvania Charter Schools	65,504.76	246,175.88		311,680.64
563 Tuition To Nonpublic Schools	294,244.06	91,200.11	602,536.81	987,980.98
564 Tuition To Career and Technology Centers	(6,007.85)	81,350.45		75,342.60
567 Tuition To Approved Private Schools (APS) and PA Chartered Schools for the Deaf and Blind	169,723.71	90,263.25	4,237.00	264,223.96
569 Tuition – Other	1,015.02	518.48		1,533.50
580 Travel	744.27	231.55		975.82
594 IU Payment By Withholding for Institutionalized Children’s Programs – Special Classes		600.00		600.00
<b>Total Other Purchased Services</b>	<b>\$571,903.85</b>	<b>\$532,921.38</b>	<b>\$652,340.97</b>	<b>\$1,757,166.20</b>
<b>600 Supplies</b>				
610 General Supplies	2,065.95	969.01	4,676.97	7,711.93
640 Books and Periodicals			3,000.00	3,000.00
650 Supplies & Fees – Technology Related	1,245.00		3,250.00	4,495.00
<b>Total Supplies</b>	<b>\$3,310.95</b>	<b>\$969.01</b>	<b>\$10,926.97</b>	<b>\$15,206.93</b>
<b>800 Other Objects</b>				
810 Dues and Fees	232.00		22,762.80	22,994.80
<b>Total Other Objects</b>	<b>\$232.00</b>		<b>\$22,762.80</b>	<b>\$22,994.80</b>
<b>Total 1200 Special Programs – Elementary / Secondary</b>	<b>\$2,748,792.35</b>	<b>\$1,418,521.30</b>	<b>\$3,900,271.40</b>	<b>\$8,067,585.05</b>

**General Fund (10)**

**1210 Life Skills Support**

	<u>Elementary</u>	<u>Secondary</u>	<u>Federal</u>	<u>Total</u>
<b>100 Personnel Services – Salaries</b>				
100 Personnel Services – Salaries	937,133.96	473,953.46	1,896,609.11	3,307,696.53
<b>Total Personnel Services – Salaries</b>	<b>\$937,133.96</b>	<b>\$473,953.46</b>	<b>\$1,896,609.11</b>	<b>\$3,307,696.53</b>
<b>200 Personnel Services – Employee Benefits</b>				
210 Group Insurance – Contracted Provider	340,330.76	159,630.00	166,809.55	666,770.31
220 Social Security Contributions	82,957.61	37,621.81	121,113.39	241,692.81
230 PSERS Retirement Contributions	366,796.10	167,285.79	543,244.42	1,077,326.31
250 Unemployment Compensation	51.83	51.84		103.67
299 All Other Employee Benefits		100.00		100.00
<b>Total Personnel Services – Employee Benefits</b>	<b>\$790,136.30</b>	<b>\$364,689.44</b>	<b>\$831,167.36</b>	<b>\$1,985,993.10</b>
<b>300 Purchased Professional and Technical Services</b>				
322 Professional Educational Services – lus	46,205.57	38,035.65	359,424.44	443,665.66
329 Professional Educational Services – Other	29,575.24	6,847.86	2,675.00	39,098.10
330 Other Professional Services	9,759.29	1,088.10	123,389.75	134,237.14
340 Technical Services	32.10	16.40		48.50
<b>Total Purchased Professional and Technical Services</b>	<b>\$85,572.20</b>	<b>\$45,988.01</b>	<b>\$485,489.19</b>	<b>\$617,049.40</b>
<b>400 Purchased Property Services</b>				
430 Repairs and Maintenance Services			975.00	975.00
<b>Total Purchased Property Services</b>			<b>\$975.00</b>	<b>\$975.00</b>
<b>500 Other Purchased Services</b>				
510 Student Transportation Services	1,292.50	236.20		1,528.70
530 Communications	1,320.00	2,803.63		4,123.63
561 Tuition To Other School Districts Within the State	44,067.38	19,541.83	45,567.16	109,176.37
562 Tuition To Pennsylvania Charter Schools	65,504.76	246,175.88		311,680.64
563 Tuition To Nonpublic Schools	294,244.06	91,200.11	602,536.81	987,980.98
564 Tuition To Career and Technology Centers	(6,007.85)	81,350.45		75,342.60
567 Tuition To Approved Private Schools (APS) and PA Chartered Schools for the Deaf and Blind		3,568.00	4,237.00	7,805.00
569 Tuition – Other	1,015.02	518.48		1,533.50
580 Travel	744.27	223.10		967.37
<b>Total Other Purchased Services</b>	<b>\$402,180.14</b>	<b>\$445,617.68</b>	<b>\$652,340.97</b>	<b>\$1,500,138.79</b>
<b>600 Supplies</b>				
610 General Supplies	2,044.57	969.01	4,583.37	7,596.95
640 Books and Periodicals			3,000.00	3,000.00
650 Supplies & Fees – Technology Related	1,245.00		3,250.00	4,495.00
<b>Total Supplies</b>	<b>\$3,289.57</b>	<b>\$969.01</b>	<b>\$10,833.37</b>	<b>\$15,091.95</b>
<b>800 Other Objects</b>				
810 Dues and Fees			22,762.80	22,762.80
<b>Total Other Objects</b>			<b>\$22,762.80</b>	<b>\$22,762.80</b>
<b>Total 1210 Life Skills Support</b>	<b>\$2,218,312.17</b>	<b>\$1,331,217.60</b>	<b>\$3,900,177.80</b>	<b>\$7,449,707.57</b>

LEA : 114061503 Daniel Boone Area SD

Printed 1/4/2019 3:56:26 PM

**General Fund (10)**

**1220 Sensory Support**

**500 Other Purchased Services**

580 Travel

**Total Other Purchased Services**

**600 Supplies**

610 General Supplies

**Total Supplies**

**Total 1220 Sensory Support**

Elementary

Secondary

Federal

Total

8.45

8.45

**\$8.45**

**\$8.45**

93.60

93.60

**\$93.60**

**\$93.60**

**\$8.45**

**\$93.60**

**\$102.05**



General Fund (10)

1240 Academic Support

100 Personnel Services – Salaries

	<u>Elementary</u>	<u>Secondary</u>	<u>Federal</u>	<u>Total</u>
100 Personnel Services – Salaries	223,091.78			223,091.78
<b>Total Personnel Services – Salaries</b>	<b>\$223,091.78</b>			<b>\$223,091.78</b>

200 Personnel Services – Employee Benefits

210 Group Insurance – Contracted Provider	48,288.99			48,288.99
220 Social Security Contributions	16,461.12			16,461.12
230 PSERS Retirement Contributions	72,661.20			72,661.20
<b>Total Personnel Services – Employee Benefits</b>	<b>\$137,411.31</b>			<b>\$137,411.31</b>

600 Supplies

610 General Supplies	21.38			21.38
<b>Total Supplies</b>	<b>\$21.38</b>			<b>\$21.38</b>

800 Other Objects

810 Dues and Fees	232.00			232.00
<b>Total Other Objects</b>	<b>\$232.00</b>			<b>\$232.00</b>

Total 1240 Academic Support

<b>Total 1240 Academic Support</b>	<b>\$360,756.47</b>			<b>\$360,756.47</b>
------------------------------------	---------------------	--	--	---------------------

General Fund (10)

	<u>Elementary</u>	<u>Secondary</u>	<u>Federal</u>	<u>Total</u>
<b>1243 Gifted Support</b>				
<b>100 Personnel Services – Salaries</b>				
100 Personnel Services – Salaries	223,091.78			223,091.78
<b>Total Personnel Services – Salaries</b>	<b>\$223,091.78</b>			<b>\$223,091.78</b>
<b>200 Personnel Services – Employee Benefits</b>				
210 Group Insurance – Contracted Provider	48,288.99			48,288.99
220 Social Security Contributions	16,461.12			16,461.12
230 PSERS Retirement Contributions	72,661.20			72,661.20
<b>Total Personnel Services – Employee Benefits</b>	<b>\$137,411.31</b>			<b>\$137,411.31</b>
<b>600 Supplies</b>				
610 General Supplies	21.38			21.38
<b>Total Supplies</b>	<b>\$21.38</b>			<b>\$21.38</b>
<b>800 Other Objects</b>				
810 Dues and Fees	232.00			232.00
<b>Total Other Objects</b>	<b>\$232.00</b>			<b>\$232.00</b>
<b>Total 1243 Gifted Support</b>	<b>\$360,756.47</b>			<b>\$360,756.47</b>

General Fund (10)

1290 Special Programs - Other Support

500 Other Purchased Services

	<u>Elementary</u>	<u>Secondary</u>	<u>Federal</u>	<u>Total</u>
567 Tuition To Approved Private Schools (APS) and PA Chartered Schools for the Deaf and Blind	169,723.71	86,695.25		256,418.96
594 IU Payment By Withholding for Institutionalized Children's Programs – Special Classes		600.00		600.00
<b>Total Other Purchased Services</b>	<b>\$169,723.71</b>	<b>\$87,295.25</b>		<b>\$257,018.96</b>
<b>Total 1290 Special Programs - Other Support</b>	<b>\$169,723.71</b>	<b>\$87,295.25</b>		<b>\$257,018.96</b>

General Fund (10)

1300 Vocational Education

100 Personnel Services – Salaries

100 Personnel Services – Salaries

Total Personnel Services – Salaries

200 Personnel Services – Employee Benefits

220 Social Security Contributions

230 PSERS Retirement Contributions

Total Personnel Services – Employee Benefits

500 Other Purchased Services

564 Tuition To Career and Technology Centers

Total Other Purchased Services

600 Supplies

640 Books and Periodicals

Total Supplies

Total 1300 Vocational Education

	<u>Elementary</u>	<u>Secondary</u>	<u>Federal</u>	<u>Total</u>
		106,081.73		106,081.73
		<b>\$106,081.73</b>		<b>\$106,081.73</b>
		7,553.69		7,553.69
		34,550.76		34,550.76
		<b>\$42,104.45</b>		<b>\$42,104.45</b>
		962,367.00		962,367.00
		<b>\$962,367.00</b>		<b>\$962,367.00</b>
		1,985.00		1,985.00
		<b>\$1,985.00</b>		<b>\$1,985.00</b>
		<b>\$1,112,538.18</b>		<b>\$1,112,538.18</b>

General Fund (10)

	<u>Elementary</u>	<u>Secondary</u>	<u>Federal</u>	<u>Total</u>
<b>1400 Other Instructional Programs – Elementary / Secondary</b>				
<b>100 Personnel Services – Salaries</b>				
100 Personnel Services – Salaries	3,769.57	7,694.76		11,464.33
<b>Total Personnel Services – Salaries</b>	<b>\$3,769.57</b>	<b>\$7,694.76</b>		<b>\$11,464.33</b>
<b>200 Personnel Services – Employee Benefits</b>				
220 Social Security Contributions	280.30	584.62		864.92
230 PSERS Retirement Contributions	1,227.76	2,506.20		3,733.96
<b>Total Personnel Services – Employee Benefits</b>	<b>\$1,508.06</b>	<b>\$3,090.82</b>		<b>\$4,598.88</b>
<b>Total 1400 Other Instructional Programs – Elementary / Secondary</b>	<b>\$5,277.63</b>	<b>\$10,785.58</b>		<b>\$16,063.21</b>

General Fund (10)

1420 Summer School

100 Personnel Services – Salaries

100 Personnel Services – Salaries

Total Personnel Services – Salaries

200 Personnel Services – Employee Benefits

220 Social Security Contributions

230 PSERS Retirement Contributions

Total Personnel Services – Employee Benefits

Total 1420 Summer School

	<u>Elementary</u>	<u>Secondary</u>	<u>Federal</u>	<u>Total</u>
	1,849.57	6,444.76		8,294.33
	<b>\$1,849.57</b>	<b>\$6,444.76</b>		<b>\$8,294.33</b>
	140.19	491.84		632.03
	602.40	2,099.06		2,701.46
	<b>\$742.59</b>	<b>\$2,590.90</b>		<b>\$3,333.49</b>
	<b>\$2,592.16</b>	<b>\$9,035.66</b>		<b>\$11,627.82</b>

General Fund (10)

	<u>Elementary</u>	<u>Secondary</u>	<u>Federal</u>	<u>Total</u>
<b>1430 Homebound Instruction</b>				
<b>100 Personnel Services – Salaries</b>				
100 Personnel Services – Salaries	1,920.00	1,250.00		3,170.00
<b>Total Personnel Services – Salaries</b>	<b>\$1,920.00</b>	<b>\$1,250.00</b>		<b>\$3,170.00</b>
<b>200 Personnel Services – Employee Benefits</b>				
220 Social Security Contributions	140.11	92.78		232.89
230 PSERS Retirement Contributions	625.36	407.14		1,032.50
<b>Total Personnel Services – Employee Benefits</b>	<b>\$765.47</b>	<b>\$499.92</b>		<b>\$1,265.39</b>
<b>Total 1430 Homebound Instruction</b>	<b>\$2,685.47</b>	<b>\$1,749.92</b>		<b>\$4,435.39</b>

General Fund (10)

1500 Nonpublic School Programs

Elementary

Secondary

Federal

Total

**300 Purchased Professional and Technical Services**

330 Other Professional Services

20,163.00

20,163.00

**Total Purchased Professional and Technical Services**

**\$20,163.00**

**\$20,163.00**

**Total 1500 Nonpublic School Programs**

**\$20,163.00**

**\$20,163.00**



**General Fund (10)**

**2000 Support Services**

**Total**

**100 Personnel Services – Salaries**

100 Personnel Services – Salaries 3,971,790.20

**Total Personnel Services – Salaries \$3,971,790.20**

**200 Personnel Services – Employee Benefits**

210 Group Insurance – Contracted Provider 718,758.52

220 Social Security Contributions 291,434.23

230 PSERS Retirement Contributions 1,261,857.55

240 Tuition Reimbursement 101,655.75

250 Unemployment Compensation 155.48

299 All Other Employee Benefits 27,747.49

**Total Personnel Services – Employee Benefits \$2,401,609.02**

**300 Purchased Professional and Technical Services**

310 Official / Administrative Services 189,380.63

323 Professional Educational Services – Other Educational Agencies 390.00

324 Professional Educational Services – Employee Training and Development Services 11,972.96

329 Professional Educational Services – Other 2,689.39

330 Other Professional Services 227,084.37

340 Technical Services 190,475.38

350 Security / Safety Services 77,403.25

390 Other Purchased Professional and Technical Services 566.00

**Total Purchased Professional and Technical Services \$699,961.98**

**400 Purchased Property Services**

410 Cleaning Services 1,432,133.44

420 Utility Services 127,687.57

430 Repairs and Maintenance Services 536,520.48

440 Rentals 17,253.92

460 Extermination Services 15,692.08

**Total Purchased Property Services \$2,129,287.49**

**500 Other Purchased Services**

513 Contracted Carriers 3,184,705.98

516 Student Transportation Services From the IU 45,617.62

520 Insurance – General 177,002.25

521 Fire Insurance 94,005.60

522 Automotive Liability Insurance 8,016.30

523 General Property and Liability Insurance 6,195.10

529 Other Insurance 8,199.00

530 Communications 82,193.68

549 Other Advertising/Public Relations 4,653.31

550 Printing and Binding 16,005.46

580 Travel 22,670.77

595 IU Payments By Withholding 37,650.60

599 Other Miscellaneous Purchased Services 6,000.00

**Total Other Purchased Services \$3,692,915.67**

LEA : 114061503 Daniel Boone Area SD

Printed 1/4/2019 3:56:28 PM

**General Fund (10)**

**2000 Support Services**

**Total**

**600 Supplies**

610 General Supplies	173,639.14
620 Energy	658,468.09
630 Food	7,353.19
640 Books and Periodicals	113,086.98
650 Supplies & Fees – Technology Related	286,407.77

**Total Supplies** **\$1,238,955.17**

**700 Property**

752 Capital Equipment – Original and Additional	(72.00)
758 Capitalized Technology Software - Original	151,532.24
762 Capitalized Equipment - Replacement	1,192.96
768 Capitalized Technology Software - Replacement	208,305.48

**Total Property** **\$360,958.68**

**800 Other Objects**

810 Dues and Fees	62,348.36
820 Claims and Judgments Against the LEA	109,043.17
890 Miscellaneous Expenditures	9,859.23

**Total Other Objects** **\$181,250.76**

**Total 2000 Support Services** **\$14,676,728.97**

**General Fund (10)**

	<u>Elementary</u>	<u>Secondary</u>	<u>Federal</u>	<u>Total</u>
<b>2100 Support Services – Students</b>				
<b>100 Personnel Services – Salaries</b>				
100 Personnel Services – Salaries	517,746.30	359,421.74	28,081.87	905,249.91
<b>Total Personnel Services – Salaries</b>	<b>\$517,746.30</b>	<b>\$359,421.74</b>	<b>\$28,081.87</b>	<b>\$905,249.91</b>
<b>200 Personnel Services – Employee Benefits</b>				
210 Group Insurance – Contracted Provider	124,420.10	110,383.44		234,803.54
220 Social Security Contributions	38,311.02	25,998.51	2,052.69	66,362.22
230 PSERS Retirement Contributions	168,630.26	117,063.73	9,146.27	294,840.26
250 Unemployment Compensation	34.45	27.74		62.19
<b>Total Personnel Services – Employee Benefits</b>	<b>\$331,395.83</b>	<b>\$253,473.42</b>	<b>\$11,198.96</b>	<b>\$596,068.21</b>
<b>300 Purchased Professional and Technical Services</b>				
330 Other Professional Services	15,710.77	7,152.10	600.00	23,462.87
<b>Total Purchased Professional and Technical Services</b>	<b>\$15,710.77</b>	<b>\$7,152.10</b>	<b>\$600.00</b>	<b>\$23,462.87</b>
<b>500 Other Purchased Services</b>				
530 Communications		(262.88)		(262.88)
580 Travel	3,030.20	2,373.80	164.54	5,568.54
<b>Total Other Purchased Services</b>	<b>\$3,030.20</b>	<b>\$2,110.92</b>	<b>\$164.54</b>	<b>\$5,305.66</b>
<b>600 Supplies</b>				
610 General Supplies	2,594.34	805.99	7,325.60	10,725.93
640 Books and Periodicals	1,344.85		701.75	2,046.60
650 Supplies & Fees – Technology Related	195.00			195.00
<b>Total Supplies</b>	<b>\$4,134.19</b>	<b>\$805.99</b>	<b>\$8,027.35</b>	<b>\$12,967.53</b>
<b>800 Other Objects</b>				
810 Dues and Fees	293.88	200.12		494.00
<b>Total Other Objects</b>	<b>\$293.88</b>	<b>\$200.12</b>		<b>\$494.00</b>
<b>Total 2100 Support Services – Students</b>	<b>\$872,311.17</b>	<b>\$623,164.29</b>	<b>\$48,072.72</b>	<b>\$1,543,548.18</b>

**General Fund (10)**

	<u>Elementary</u>	<u>Secondary</u>	<u>Federal</u>	<u>Total</u>
<b>2110 Supervision of Student Services</b>				
<b>100 Personnel Services – Salaries</b>				
100 Personnel Services – Salaries	25,125.04	12,833.92	14,732.07	52,691.03
<b>Total Personnel Services – Salaries</b>	<b>\$25,125.04</b>	<b>\$12,833.92</b>	<b>\$14,732.07</b>	<b>\$52,691.03</b>
<b>200 Personnel Services – Employee Benefits</b>				
210 Group Insurance – Contracted Provider	12,626.12	6,449.45		19,075.57
220 Social Security Contributions	1,824.01	931.71	1,047.79	3,803.51
230 PSERS Retirement Contributions	8,183.27	4,180.04	4,798.24	17,161.55
250 Unemployment Compensation	13.72	7.01		20.73
<b>Total Personnel Services – Employee Benefits</b>	<b>\$22,647.12</b>	<b>\$11,568.21</b>	<b>\$5,846.03</b>	<b>\$40,061.36</b>
<b>500 Other Purchased Services</b>				
580 Travel	2,483.17	1,268.41	164.54	3,916.12
<b>Total Other Purchased Services</b>	<b>\$2,483.17</b>	<b>\$1,268.41</b>	<b>\$164.54</b>	<b>\$3,916.12</b>
<b>600 Supplies</b>				
610 General Supplies			2,737.42	2,737.42
<b>Total Supplies</b>			<b>\$2,737.42</b>	<b>\$2,737.42</b>
<b>800 Other Objects</b>				
810 Dues and Fees	293.88	150.12		444.00
<b>Total Other Objects</b>	<b>\$293.88</b>	<b>\$150.12</b>		<b>\$444.00</b>
<b>Total 2110 Supervision of Student Services</b>	<b>\$50,549.21</b>	<b>\$25,820.66</b>	<b>\$23,480.06</b>	<b>\$99,849.93</b>

**General Fund (10)**

	<u>Elementary</u>	<u>Secondary</u>	<u>Federal</u>	<u>Total</u>
<b>2111 Supervision of Student Services – Head of Component</b>				
<b>100 Personnel Services – Salaries</b>				
100 Personnel Services – Salaries	25,125.04	12,833.92	14,732.07	52,691.03
<b>Total Personnel Services – Salaries</b>	<b>\$25,125.04</b>	<b>\$12,833.92</b>	<b>\$14,732.07</b>	<b>\$52,691.03</b>
<b>200 Personnel Services – Employee Benefits</b>				
210 Group Insurance – Contracted Provider	12,626.12	6,449.45		19,075.57
220 Social Security Contributions	1,824.01	931.71	1,047.79	3,803.51
230 PSERS Retirement Contributions	8,183.27	4,180.04	4,798.24	17,161.55
250 Unemployment Compensation	13.72	7.01		20.73
<b>Total Personnel Services – Employee Benefits</b>	<b>\$22,647.12</b>	<b>\$11,568.21</b>	<b>\$5,846.03</b>	<b>\$40,061.36</b>
<b>500 Other Purchased Services</b>				
580 Travel	2,483.17	1,268.41	164.54	3,916.12
<b>Total Other Purchased Services</b>	<b>\$2,483.17</b>	<b>\$1,268.41</b>	<b>\$164.54</b>	<b>\$3,916.12</b>
<b>600 Supplies</b>				
610 General Supplies			2,737.42	2,737.42
<b>Total Supplies</b>			<b>\$2,737.42</b>	<b>\$2,737.42</b>
<b>800 Other Objects</b>				
810 Dues and Fees	293.88	150.12		444.00
<b>Total Other Objects</b>	<b>\$293.88</b>	<b>\$150.12</b>		<b>\$444.00</b>
<b>Total 2111 Supervision of Student Services – Head of Component</b>	<b>\$50,549.21</b>	<b>\$25,820.66</b>	<b>\$23,480.06</b>	<b>\$99,849.93</b>

**General Fund (10)**

	<u>Elementary</u>	<u>Secondary</u>	<u>Federal</u>	<u>Total</u>
<b>2120 Guidance Services</b>				
<b>100 Personnel Services – Salaries</b>				
100 Personnel Services – Salaries	427,599.50	313,374.56		740,974.06
<b>Total Personnel Services – Salaries</b>	<b>\$427,599.50</b>	<b>\$313,374.56</b>		<b>\$740,974.06</b>
<b>200 Personnel Services – Employee Benefits</b>				
210 Group Insurance – Contracted Provider	87,970.99	91,765.16		179,736.15
220 Social Security Contributions	31,727.38	22,635.57		54,362.95
230 PSERS Retirement Contributions	139,269.27	102,066.06		241,335.33
250 Unemployment Compensation	20.73	20.73		41.46
<b>Total Personnel Services – Employee Benefits</b>	<b>\$258,988.37</b>	<b>\$216,487.52</b>		<b>\$475,475.89</b>
<b>300 Purchased Professional and Technical Services</b>				
330 Other Professional Services		(873.00)		(873.00)
<b>Total Purchased Professional and Technical Services</b>		<b>(\$873.00)</b>		<b>(\$873.00)</b>
<b>500 Other Purchased Services</b>				
530 Communications		(262.88)		(262.88)
580 Travel		825.97		825.97
<b>Total Other Purchased Services</b>		<b>\$563.09</b>		<b>\$563.09</b>
<b>600 Supplies</b>				
610 General Supplies	2,594.34	805.99		3,400.33
640 Books and Periodicals	1,344.85			1,344.85
650 Supplies & Fees – Technology Related	195.00			195.00
<b>Total Supplies</b>	<b>\$4,134.19</b>	<b>\$805.99</b>		<b>\$4,940.18</b>
<b>800 Other Objects</b>				
810 Dues and Fees		50.00		50.00
<b>Total Other Objects</b>		<b>\$50.00</b>		<b>\$50.00</b>
<b>Total 2120 Guidance Services</b>	<b>\$690,722.06</b>	<b>\$530,408.16</b>		<b>\$1,221,130.22</b>

**General Fund (10)**

	<u>Elementary</u>	<u>Secondary</u>	<u>Federal</u>	<u>Total</u>
<b>2140 Psychological Services</b>				
<b>100 Personnel Services – Salaries</b>				
100 Personnel Services – Salaries	65,021.76	33,213.26	13,349.80	111,584.82
<b>Total Personnel Services – Salaries</b>	<b>\$65,021.76</b>	<b>\$33,213.26</b>	<b>\$13,349.80</b>	<b>\$111,584.82</b>
<b>200 Personnel Services – Employee Benefits</b>				
210 Group Insurance – Contracted Provider	23,822.99	12,168.83		35,991.82
220 Social Security Contributions	4,759.63	2,431.23	1,004.90	8,195.76
230 PSERS Retirement Contributions	21,177.72	10,817.63	4,348.03	36,343.38
<b>Total Personnel Services – Employee Benefits</b>	<b>\$49,760.34</b>	<b>\$25,417.69</b>	<b>\$5,352.93</b>	<b>\$80,530.96</b>
<b>300 Purchased Professional and Technical Services</b>				
330 Other Professional Services	15,710.77	8,025.10	600.00	24,335.87
<b>Total Purchased Professional and Technical Services</b>	<b>\$15,710.77</b>	<b>\$8,025.10</b>	<b>\$600.00</b>	<b>\$24,335.87</b>
<b>500 Other Purchased Services</b>				
580 Travel	547.03	279.42		826.45
<b>Total Other Purchased Services</b>	<b>\$547.03</b>	<b>\$279.42</b>		<b>\$826.45</b>
<b>600 Supplies</b>				
610 General Supplies			4,588.18	4,588.18
640 Books and Periodicals			701.75	701.75
<b>Total Supplies</b>			<b>\$5,289.93</b>	<b>\$5,289.93</b>
<b>Total 2140 Psychological Services</b>	<b>\$131,039.90</b>	<b>\$66,935.47</b>	<b>\$24,592.66</b>	<b>\$222,568.03</b>

**General Fund (10)**

	<u>Elementary</u>	<u>Secondary</u>	<u>Federal</u>	<u>Total</u>
<b>2200 Support Services – Instructional Staff</b>				
<b>100 Personnel Services – Salaries</b>				
100 Personnel Services – Salaries	590,247.12	269,744.98	38,961.06	898,953.16
<b>Total Personnel Services – Salaries</b>	<b>\$590,247.12</b>	<b>\$269,744.98</b>	<b>\$38,961.06</b>	<b>\$898,953.16</b>
<b>200 Personnel Services – Employee Benefits</b>				
210 Group Insurance – Contracted Provider	76,273.25	28,487.93		104,761.18
220 Social Security Contributions	44,259.53	20,378.50	2,959.14	67,597.17
230 PSERS Retirement Contributions	190,580.87	87,006.58	12,689.63	290,277.08
240 Tuition Reimbursement	48,309.49	53,346.26		101,655.75
<b>Total Personnel Services – Employee Benefits</b>	<b>\$359,423.14</b>	<b>\$189,219.27</b>	<b>\$15,648.77</b>	<b>\$564,291.18</b>
<b>300 Purchased Professional and Technical Services</b>				
324 Professional Educational Services – Employee Training and Development Services	1,113.84	3,633.42	1,304.00	6,051.26
329 Professional Educational Services – Other	764.39	390.45	1,137.05	2,291.89
330 Other Professional Services	12,353.79	7,275.34		19,629.13
340 Technical Services	125,695.78	64,205.69		189,901.47
350 Security / Safety Services	3,971.40	2,028.60		6,000.00
390 Other Purchased Professional and Technical Services	374.64	191.36		566.00
<b>Total Purchased Professional and Technical Services</b>	<b>\$144,273.84</b>	<b>\$77,724.86</b>	<b>\$2,441.05</b>	<b>\$224,439.75</b>
<b>400 Purchased Property Services</b>				
430 Repairs and Maintenance Services	322.21	164.58		486.79
<b>Total Purchased Property Services</b>	<b>\$322.21</b>	<b>\$164.58</b>		<b>\$486.79</b>
<b>500 Other Purchased Services</b>				
580 Travel	4,106.23	3,757.71	419.91	8,283.85
<b>Total Other Purchased Services</b>	<b>\$4,106.23</b>	<b>\$3,757.71</b>	<b>\$419.91</b>	<b>\$8,283.85</b>
<b>600 Supplies</b>				
610 General Supplies	14,817.64	3,503.20		18,320.84
640 Books and Periodicals	72,801.13	37,596.41		110,397.54
650 Supplies & Fees – Technology Related	55,749.86	28,544.81		84,294.67
<b>Total Supplies</b>	<b>\$143,368.63</b>	<b>\$69,644.42</b>		<b>\$213,013.05</b>
<b>700 Property</b>				
758 Capitalized Technology Software - Original	3,893.92	147,638.32		151,532.24
768 Capitalized Technology Software - Replacement	139,464.36	68,841.12		208,305.48
<b>Total Property</b>	<b>\$143,358.28</b>	<b>\$216,479.44</b>		<b>\$359,837.72</b>
<b>800 Other Objects</b>				
810 Dues and Fees	1,780.15	1,140.65	195.00	3,115.80
<b>Total Other Objects</b>	<b>\$1,780.15</b>	<b>\$1,140.65</b>	<b>\$195.00</b>	<b>\$3,115.80</b>
<b>Total 2200 Support Services – Instructional Staff</b>	<b>\$1,386,879.60</b>	<b>\$827,875.91</b>	<b>\$57,665.79</b>	<b>\$2,272,421.30</b>



**General Fund (10)**

	<u>Elementary</u>	<u>Secondary</u>	<u>Federal</u>	<u>Total</u>
<b>2240 Computer-Assisted Instruction Support Services</b>				
<b>100 Personnel Services – Salaries</b>				
100 Personnel Services – Salaries	235,047.68	120,062.89		355,110.57
<b>Total Personnel Services – Salaries</b>	<b>\$235,047.68</b>	<b>\$120,062.89</b>		<b>\$355,110.57</b>
<b>200 Personnel Services – Employee Benefits</b>				
210 Group Insurance – Contracted Provider	33,694.69	17,211.33		50,906.02
220 Social Security Contributions	17,622.27	9,001.50		26,623.77
230 PSERS Retirement Contributions	76,549.47	39,101.64		115,651.11
<b>Total Personnel Services – Employee Benefits</b>	<b>\$127,866.43</b>	<b>\$65,314.47</b>		<b>\$193,180.90</b>
<b>300 Purchased Professional and Technical Services</b>				
330 Other Professional Services		200.00		200.00
340 Technical Services	125,695.78	64,205.69		189,901.47
<b>Total Purchased Professional and Technical Services</b>	<b>\$125,695.78</b>	<b>\$64,405.69</b>		<b>\$190,101.47</b>
<b>400 Purchased Property Services</b>				
430 Repairs and Maintenance Services	322.21	164.58		486.79
<b>Total Purchased Property Services</b>	<b>\$322.21</b>	<b>\$164.58</b>		<b>\$486.79</b>
<b>500 Other Purchased Services</b>				
580 Travel	2,450.16	1,251.55		3,701.71
<b>Total Other Purchased Services</b>	<b>\$2,450.16</b>	<b>\$1,251.55</b>		<b>\$3,701.71</b>
<b>600 Supplies</b>				
610 General Supplies	12,088.89	2,348.07		14,436.96
650 Supplies & Fees – Technology Related	19,862.97	10,213.70		30,076.67
<b>Total Supplies</b>	<b>\$31,951.86</b>	<b>\$12,561.77</b>		<b>\$44,513.63</b>
<b>700 Property</b>				
758 Capitalized Technology Software - Original	3,893.92	147,638.32		151,532.24
768 Capitalized Technology Software - Replacement	139,464.36	68,841.12		208,305.48
<b>Total Property</b>	<b>\$143,358.28</b>	<b>\$216,479.44</b>		<b>\$359,837.72</b>
<b>800 Other Objects</b>				
810 Dues and Fees	39.71	20.29		60.00
<b>Total Other Objects</b>	<b>\$39.71</b>	<b>\$20.29</b>		<b>\$60.00</b>
<b>Total 2240 Computer-Assisted Instruction Support Services</b>	<b>\$666,732.11</b>	<b>\$480,260.68</b>		<b>\$1,146,992.79</b>

General Fund (10)

	<u>Elementary</u>	<u>Secondary</u>	<u>Federal</u>	<u>Total</u>
<b>2250 School Library Services</b>				
<b>100 Personnel Services – Salaries</b>				
100 Personnel Services – Salaries	128,230.64	33,745.92		161,976.56
<b>Total Personnel Services – Salaries</b>	<b>\$128,230.64</b>	<b>\$33,745.92</b>		<b>\$161,976.56</b>
<b>200 Personnel Services – Employee Benefits</b>				
210 Group Insurance – Contracted Provider	20,577.45	38.40		20,615.85
220 Social Security Contributions	9,432.25	2,588.64		12,020.89
230 PSERS Retirement Contributions	41,764.77	10,990.99		52,755.76
<b>Total Personnel Services – Employee Benefits</b>	<b>\$71,774.47</b>	<b>\$13,618.03</b>		<b>\$85,392.50</b>
<b>600 Supplies</b>				
610 General Supplies	927.01	234.80		1,161.81
640 Books and Periodicals	10,955.99	6,005.78		16,961.77
<b>Total Supplies</b>	<b>\$11,883.00</b>	<b>\$6,240.58</b>		<b>\$18,123.58</b>
<b>800 Other Objects</b>				
810 Dues and Fees	472.90	472.90		945.80
<b>Total Other Objects</b>	<b>\$472.90</b>	<b>\$472.90</b>		<b>\$945.80</b>
<b>Total 2250 School Library Services</b>	<b>\$212,361.01</b>	<b>\$54,077.43</b>		<b>\$266,438.44</b>

**General Fund (10)**

	<u>Elementary</u>	<u>Secondary</u>	<u>Federal</u>	<u>Total</u>
<b>2260 Instruction and Curriculum Development Services</b>				
<b>100 Personnel Services – Salaries</b>				
100 Personnel Services – Salaries	226,968.80	115,936.17	38,961.06	381,866.03
<b>Total Personnel Services – Salaries</b>	<b>\$226,968.80</b>	<b>\$115,936.17</b>	<b>\$38,961.06</b>	<b>\$381,866.03</b>
<b>200 Personnel Services – Employee Benefits</b>				
210 Group Insurance – Contracted Provider	22,001.11	11,238.20		33,239.31
220 Social Security Contributions	17,205.01	8,788.36	2,959.14	28,952.51
230 PSERS Retirement Contributions	72,266.63	36,913.95	12,689.63	121,870.21
<b>Total Personnel Services – Employee Benefits</b>	<b>\$111,472.75</b>	<b>\$56,940.51</b>	<b>\$15,648.77</b>	<b>\$184,062.03</b>
<b>300 Purchased Professional and Technical Services</b>				
329 Professional Educational Services – Other	764.39	390.45		1,154.84
330 Other Professional Services	12,353.79	6,310.34		18,664.13
350 Security / Safety Services	3,971.40	2,028.60		6,000.00
390 Other Purchased Professional and Technical Services	374.64	191.36		566.00
<b>Total Purchased Professional and Technical Services</b>	<b>\$17,464.22</b>	<b>\$8,920.75</b>		<b>\$26,384.97</b>
<b>500 Other Purchased Services</b>				
580 Travel	469.04	239.59		708.63
<b>Total Other Purchased Services</b>	<b>\$469.04</b>	<b>\$239.59</b>		<b>\$708.63</b>
<b>600 Supplies</b>				
610 General Supplies	1,780.60	909.53		2,690.13
640 Books and Periodicals	61,845.14	31,590.63		93,435.77
650 Supplies & Fees – Technology Related	35,886.89	18,331.11		54,218.00
<b>Total Supplies</b>	<b>\$99,512.63</b>	<b>\$50,831.27</b>		<b>\$150,343.90</b>
<b>800 Other Objects</b>				
810 Dues and Fees	1,267.54	647.46		1,915.00
<b>Total Other Objects</b>	<b>\$1,267.54</b>	<b>\$647.46</b>		<b>\$1,915.00</b>
<b>Total 2260 Instruction and Curriculum Development Services</b>	<b>\$457,154.98</b>	<b>\$233,515.75</b>	<b>\$54,609.83</b>	<b>\$745,280.56</b>

**General Fund (10)**

	<u>Elementary</u>	<u>Secondary</u>	<u>Federal</u>	<u>Total</u>
<b>2270 Instructional Staff Professional Development Services</b>				
<b>200 Personnel Services – Employee Benefits</b>				
240 Tuition Reimbursement	48,309.49	53,346.26		101,655.75
<b>Total Personnel Services – Employee Benefits</b>	<b>\$48,309.49</b>	<b>\$53,346.26</b>		<b>\$101,655.75</b>
<b>300 Purchased Professional and Technical Services</b>				
324 Professional Educational Services – Employee Training and Development Services	1,113.84	3,633.42	1,304.00	6,051.26
329 Professional Educational Services – Other			1,137.05	1,137.05
330 Other Professional Services		765.00		765.00
<b>Total Purchased Professional and Technical Services</b>	<b>\$1,113.84</b>	<b>\$4,398.42</b>	<b>\$2,441.05</b>	<b>\$7,953.31</b>
<b>500 Other Purchased Services</b>				
580 Travel	1,187.03	2,266.57	419.91	3,873.51
<b>Total Other Purchased Services</b>	<b>\$1,187.03</b>	<b>\$2,266.57</b>	<b>\$419.91</b>	<b>\$3,873.51</b>
<b>600 Supplies</b>				
610 General Supplies	21.14	10.80		31.94
<b>Total Supplies</b>	<b>\$21.14</b>	<b>\$10.80</b>		<b>\$31.94</b>
<b>800 Other Objects</b>				
810 Dues and Fees			195.00	195.00
<b>Total Other Objects</b>			<b>\$195.00</b>	<b>\$195.00</b>
<b>Total 2270 Instructional Staff Professional Development Services</b>	<b>\$50,631.50</b>	<b>\$60,022.05</b>	<b>\$3,055.96</b>	<b>\$113,709.51</b>

**General Fund (10)**

	<u>Elementary</u>	<u>Secondary</u>	<u>Federal</u>	<u>Total</u>
<b>2300 Support Services – Administration</b>				
<b>100 Personnel Services – Salaries</b>				
100 Personnel Services – Salaries	673,604.50	383,112.64		1,286,927.45
<b>Total Personnel Services – Salaries</b>	<b>\$673,604.50</b>	<b>\$383,112.64</b>		<b>\$1,286,927.45</b>
<b>200 Personnel Services – Employee Benefits</b>				
210 Group Insurance – Contracted Provider	147,277.61	46,450.08		220,836.75
220 Social Security Contributions	49,691.41	28,712.08		94,509.60
230 PSERS Retirement Contributions	209,901.19	120,638.56		403,122.36
250 Unemployment Compensation				20.73
299 All Other Employee Benefits	80.00	20.00		240.00
<b>Total Personnel Services – Employee Benefits</b>	<b>\$406,950.21</b>	<b>\$195,820.72</b>		<b>\$718,729.44</b>
<b>300 Purchased Professional and Technical Services</b>				
310 Official / Administrative Services				158,435.00
330 Other Professional Services	100.00	16.00		133,217.85
350 Security / Safety Services		71,403.25		71,403.25
<b>Total Purchased Professional and Technical Services</b>	<b>\$100.00</b>	<b>\$71,419.25</b>		<b>\$363,056.10</b>
<b>400 Purchased Property Services</b>				
440 Rentals	656.21			656.21
<b>Total Purchased Property Services</b>	<b>\$656.21</b>			<b>\$656.21</b>
<b>500 Other Purchased Services</b>				
520 Insurance – General				177,002.25
530 Communications	104.23	53.24		11,192.78
549 Other Advertising/Public Relations				4,653.31
550 Printing and Binding	830.00			16,005.46
580 Travel	1,769.32	1,679.55		6,769.40
599 Other Miscellaneous Purchased Services				6,000.00
<b>Total Other Purchased Services</b>	<b>\$2,703.55</b>	<b>\$1,732.79</b>		<b>\$221,623.20</b>
<b>600 Supplies</b>				
610 General Supplies	14,835.38	8,454.08		25,378.42
630 Food	3,399.28	661.10		4,311.13
640 Books and Periodicals	306.98			642.84
650 Supplies & Fees – Technology Related				1,780.80
<b>Total Supplies</b>	<b>\$18,541.64</b>	<b>\$9,115.18</b>		<b>\$32,113.19</b>
<b>700 Property</b>				
752 Capital Equipment – Original and Additional		(72.00)		(72.00)
762 Capitalized Equipment - Replacement				1,192.96
<b>Total Property</b>		<b>(\$72.00)</b>		<b>\$1,120.96</b>
<b>800 Other Objects</b>				
810 Dues and Fees	6,342.99	1,785.00		34,501.26
820 Claims and Judgments Against the LEA				109,043.17
890 Miscellaneous Expenditures				10,129.23
<b>Total Other Objects</b>	<b>\$6,342.99</b>	<b>\$1,785.00</b>		<b>\$153,673.66</b>
<b>Total 2300 Support Services – Administration</b>	<b>\$1,108,899.10</b>	<b>\$662,913.58</b>		<b>\$2,777,900.21</b>

General Fund (10)

2310 Board Services

Elementary

Secondary

Federal

Total

100 Personnel Services – Salaries

100 Personnel Services – Salaries

3,628.55

**Total Personnel Services – Salaries**

**\$3,628.55**

200 Personnel Services – Employee Benefits

220 Social Security Contributions

238.65

230 PSERS Retirement Contributions

1,181.83

**Total Personnel Services – Employee Benefits**

**\$1,420.48**

300 Purchased Professional and Technical Services

330 Other Professional Services

6,475.00

**Total Purchased Professional and Technical Services**

**\$6,475.00**

500 Other Purchased Services

549 Other Advertising/Public Relations

2,910.81

580 Travel

415.14

599 Other Miscellaneous Purchased Services

6,000.00

**Total Other Purchased Services**

**\$9,325.95**

600 Supplies

610 General Supplies

590.85

**Total Supplies**

**\$590.85**

800 Other Objects

810 Dues and Fees

20,655.79

820 Claims and Judgments Against the LEA

109,043.17

**Total Other Objects**

**\$129,698.96**

**Total 2310 Board Services**

**\$151,139.79**

General Fund (10)

	<u>Elementary</u>	<u>Secondary</u>	<u>Federal</u>	<u>Total</u>
<b>2330 Tax Assessment and Collection Services</b>				
<b>100 Personnel Services – Salaries</b>				
100 Personnel Services – Salaries				32,832.96
<b>Total Personnel Services – Salaries</b>				<b>\$32,832.96</b>
<b>200 Personnel Services – Employee Benefits</b>				
210 Group Insurance – Contracted Provider				416.57
220 Social Security Contributions				2,431.83
230 PSERS Retirement Contributions				10,050.59
<b>Total Personnel Services – Employee Benefits</b>				<b>\$12,898.99</b>
<b>300 Purchased Professional and Technical Services</b>				
310 Official / Administrative Services				14,503.95
<b>Total Purchased Professional and Technical Services</b>				<b>\$14,503.95</b>
<b>500 Other Purchased Services</b>				
520 Insurance – General				177,002.25
530 Communications				11,035.31
550 Printing and Binding				15,175.46
<b>Total Other Purchased Services</b>				<b>\$203,213.02</b>
<b>Total 2330 Tax Assessment and Collection Services</b>				<b>\$263,448.92</b>

General Fund (10)

	<u>Elementary</u>	<u>Secondary</u>	<u>Federal</u>	<u>Total</u>
<b>2350 Legal and Accounting Services</b>				
<b>300 <u>Purchased Professional and Technical Services</u></b>				
330 Other Professional Services				126,626.85
<b>Total Purchased Professional and Technical Services</b>				<b>\$126,626.85</b>
<b>Total 2350 Legal and Accounting Services</b>				<b>\$126,626.85</b>



**General Fund (10)**

	<u>Elementary</u>	<u>Secondary</u>	<u>Federal</u>	<u>Total</u>
<b>2360 Office of the Superintendent / Executive Director Services</b>				
<b>100 Personnel Services – Salaries</b>				
100 Personnel Services – Salaries				193,748.80
<b>Total Personnel Services – Salaries</b>				<b>\$193,748.80</b>
<b>200 Personnel Services – Employee Benefits</b>				
210 Group Insurance – Contracted Provider				26,692.49
220 Social Security Contributions				13,435.63
230 PSERS Retirement Contributions				61,350.19
250 Unemployment Compensation				20.73
299 All Other Employee Benefits				140.00
<b>Total Personnel Services – Employee Benefits</b>				<b>\$101,639.04</b>
<b>500 Other Purchased Services</b>				
530 Communications	104.23	53.24		157.47
549 Other Advertising/Public Relations				1,742.50
580 Travel				2,905.39
<b>Total Other Purchased Services</b>	<b>\$104.23</b>	<b>\$53.24</b>		<b>\$4,805.36</b>
<b>600 Supplies</b>				
610 General Supplies				1,498.11
630 Food				250.75
640 Books and Periodicals				335.86
650 Supplies & Fees – Technology Related				1,780.80
<b>Total Supplies</b>				<b>\$3,865.52</b>
<b>700 Property</b>				
762 Capitalized Equipment - Replacement				1,192.96
<b>Total Property</b>				<b>\$1,192.96</b>
<b>800 Other Objects</b>				
810 Dues and Fees				5,717.48
890 Miscellaneous Expenditures				10,129.23
<b>Total Other Objects</b>				<b>\$15,846.71</b>
<b>Total 2360 Office of the Superintendent / Executive Director Services</b>	<b>\$104.23</b>	<b>\$53.24</b>		<b>\$321,098.39</b>

**General Fund (10)**

	<u>Elementary</u>	<u>Secondary</u>	<u>Federal</u>	<u>Total</u>
<b>2380 Office of the Principal Services</b>				
<b>100 Personnel Services – Salaries</b>				
100 Personnel Services – Salaries	673,604.50	383,112.64		1,056,717.14
<b>Total Personnel Services – Salaries</b>	<b>\$673,604.50</b>	<b>\$383,112.64</b>		<b>\$1,056,717.14</b>
<b>200 Personnel Services – Employee Benefits</b>				
210 Group Insurance – Contracted Provider	147,277.61	46,450.08		193,727.69
220 Social Security Contributions	49,691.41	28,712.08		78,403.49
230 PSERS Retirement Contributions	209,901.19	120,638.56		330,539.75
299 All Other Employee Benefits	80.00	20.00		100.00
<b>Total Personnel Services – Employee Benefits</b>	<b>\$406,950.21</b>	<b>\$195,820.72</b>		<b>\$602,770.93</b>
<b>300 Purchased Professional and Technical Services</b>				
330 Other Professional Services	100.00	16.00		116.00
350 Security / Safety Services		71,403.25		71,403.25
<b>Total Purchased Professional and Technical Services</b>	<b>\$100.00</b>	<b>\$71,419.25</b>		<b>\$71,519.25</b>
<b>400 Purchased Property Services</b>				
440 Rentals	656.21			656.21
<b>Total Purchased Property Services</b>	<b>\$656.21</b>			<b>\$656.21</b>
<b>500 Other Purchased Services</b>				
550 Printing and Binding	830.00			830.00
580 Travel	1,769.32	1,679.55		3,448.87
<b>Total Other Purchased Services</b>	<b>\$2,599.32</b>	<b>\$1,679.55</b>		<b>\$4,278.87</b>
<b>600 Supplies</b>				
610 General Supplies	14,835.38	8,454.08		23,289.46
630 Food	3,399.28	661.10		4,060.38
640 Books and Periodicals	306.98			306.98
<b>Total Supplies</b>	<b>\$18,541.64</b>	<b>\$9,115.18</b>		<b>\$27,656.82</b>
<b>700 Property</b>				
752 Capital Equipment – Original and Additional		(72.00)		(72.00)
<b>Total Property</b>		<b>(\$72.00)</b>		<b>(\$72.00)</b>
<b>800 Other Objects</b>				
810 Dues and Fees	6,342.99	1,785.00		8,127.99
<b>Total Other Objects</b>	<b>\$6,342.99</b>	<b>\$1,785.00</b>		<b>\$8,127.99</b>
<b>Total 2380 Office of the Principal Services</b>	<b>\$1,108,794.87</b>	<b>\$662,860.34</b>		<b>\$1,771,655.21</b>

LEA : 114061503 Daniel Boone Area SD

Printed 1/4/2019 3:56:28 PM

General Fund (10)

2390 Other Administration Services

Elementary

Secondary

Federal

Total

300 Purchased Professional and Technical Services

310 Official / Administrative Services

143,931.05

**Total Purchased Professional and Technical Services**

**\$143,931.05**

**Total 2390 Other Administration Services**

**\$143,931.05**

General Fund (10)

	<u>Elementary</u>	<u>Secondary</u>	<u>Federal</u>	<u>Total</u>
<b>2400 Support Services – Pupil Health</b>				
<b>100 Personnel Services – Salaries</b>				
100 Personnel Services – Salaries			177,025.65	352,767.64
<b>Total Personnel Services – Salaries</b>			<b>\$177,025.65</b>	<b>\$352,767.64</b>
<b>200 Personnel Services – Employee Benefits</b>				
210 Group Insurance – Contracted Provider				57,683.02
220 Social Security Contributions			13,256.47	24,473.83
230 PSERS Retirement Contributions			57,657.30	106,444.39
<b>Total Personnel Services – Employee Benefits</b>			<b>\$70,913.77</b>	<b>\$188,601.24</b>
<b>300 Purchased Professional and Technical Services</b>				
329 Professional Educational Services – Other				397.50
330 Other Professional Services				46,175.25
<b>Total Purchased Professional and Technical Services</b>				<b>\$46,572.75</b>
<b>500 Other Purchased Services</b>				
580 Travel				57.06
<b>Total Other Purchased Services</b>				<b>\$57.06</b>
<b>600 Supplies</b>				
610 General Supplies				7,340.86
<b>Total Supplies</b>				<b>\$7,340.86</b>
<b>Total 2400 Support Services – Pupil Health</b>			<b>\$247,939.42</b>	<b>\$595,339.55</b>

**General Fund (10)**

**2440 Nursing Services**

	<u>Elementary</u>	<u>Secondary</u>	<u>Federal</u>	<u>Total</u>
<b>100 Personnel Services – Salaries</b>				
100 Personnel Services – Salaries			177,025.65	352,767.64
<b>Total Personnel Services – Salaries</b>			<b>\$177,025.65</b>	<b>\$352,767.64</b>
<b>200 Personnel Services – Employee Benefits</b>				
210 Group Insurance – Contracted Provider				57,683.02
220 Social Security Contributions			13,256.47	24,473.83
230 PSERS Retirement Contributions			57,657.30	106,444.39
<b>Total Personnel Services – Employee Benefits</b>			<b>\$70,913.77</b>	<b>\$188,601.24</b>
<b>300 Purchased Professional and Technical Services</b>				
329 Professional Educational Services – Other				397.50
330 Other Professional Services				46,175.25
<b>Total Purchased Professional and Technical Services</b>				<b>\$46,572.75</b>
<b>500 Other Purchased Services</b>				
580 Travel				57.06
<b>Total Other Purchased Services</b>				<b>\$57.06</b>
<b>600 Supplies</b>				
610 General Supplies				7,340.86
<b>Total Supplies</b>				<b>\$7,340.86</b>
<b>Total 2440 Nursing Services</b>			<b>\$247,939.42</b>	<b>\$595,339.55</b>

General Fund (10)

2500 Support Services – Business

Elementary                      Secondary                      Federal                      Total

100 Personnel Services – Salaries

100 Personnel Services – Salaries 386,073.34

**Total Personnel Services – Salaries \$386,073.34**

200 Personnel Services – Employee Benefits

210 Group Insurance – Contracted Provider 81,096.72

220 Social Security Contributions 27,977.91

230 PSERS Retirement Contributions 120,983.25

250 Unemployment Compensation 20.73

299 All Other Employee Benefits 27,507.49

**Total Personnel Services – Employee Benefits \$257,586.10**

300 Purchased Professional and Technical Services

340 Technical Services 573.91

**Total Purchased Professional and Technical Services \$573.91**

500 Other Purchased Services

580 Travel 1,320.46

**Total Other Purchased Services \$1,320.46**

600 Supplies

610 General Supplies 3,913.81

630 Food 93.79

650 Supplies & Fees – Technology Related 1,025.00

**Total Supplies \$5,032.60**

800 Other Objects

810 Dues and Fees 21,822.60

890 Miscellaneous Expenditures (270.00)

**Total Other Objects \$21,552.60**

**Total 2500 Support Services – Business \$672,139.01**

General Fund (10)

2510 Fiscal Services

Elementary                      Secondary                      Federal                      Total

<b>100 Personnel Services – Salaries</b>				
100 Personnel Services – Salaries				386,073.34
<b>Total Personnel Services – Salaries</b>				<b>\$386,073.34</b>
<b>200 Personnel Services – Employee Benefits</b>				
210 Group Insurance – Contracted Provider				81,096.72
220 Social Security Contributions				27,977.91
230 PSERS Retirement Contributions				120,983.25
250 Unemployment Compensation				20.73
299 All Other Employee Benefits				27,507.49
<b>Total Personnel Services – Employee Benefits</b>				<b>\$257,586.10</b>
<b>300 Purchased Professional and Technical Services</b>				
340 Technical Services				573.91
<b>Total Purchased Professional and Technical Services</b>				<b>\$573.91</b>
<b>500 Other Purchased Services</b>				
580 Travel				1,320.46
<b>Total Other Purchased Services</b>				<b>\$1,320.46</b>
<b>600 Supplies</b>				
610 General Supplies				3,913.81
630 Food				93.79
650 Supplies & Fees – Technology Related				1,025.00
<b>Total Supplies</b>				<b>\$5,032.60</b>
<b>800 Other Objects</b>				
810 Dues and Fees				21,822.60
890 Miscellaneous Expenditures				(270.00)
<b>Total Other Objects</b>				<b>\$21,552.60</b>
<b>Total 2510 Fiscal Services</b>				<b>\$672,139.01</b>

**General Fund (10)**

	<u>Elementary</u>	<u>Secondary</u>	<u>Federal</u>	<u>Total</u>
<b>2511 Supervision of Fiscal Services - Head of Component</b>				
<b>100 Personnel Services – Salaries</b>				
100 Personnel Services – Salaries				386,073.34
<b>Total Personnel Services – Salaries</b>				<b>\$386,073.34</b>
<b>200 Personnel Services – Employee Benefits</b>				
210 Group Insurance – Contracted Provider				81,096.72
220 Social Security Contributions				27,977.91
230 PSERS Retirement Contributions				120,983.25
250 Unemployment Compensation				20.73
299 All Other Employee Benefits				27,507.49
<b>Total Personnel Services – Employee Benefits</b>				<b>\$257,586.10</b>
<b>300 Purchased Professional and Technical Services</b>				
340 Technical Services				573.91
<b>Total Purchased Professional and Technical Services</b>				<b>\$573.91</b>
<b>500 Other Purchased Services</b>				
580 Travel				1,320.46
<b>Total Other Purchased Services</b>				<b>\$1,320.46</b>
<b>600 Supplies</b>				
610 General Supplies				3,913.81
630 Food				93.79
650 Supplies & Fees – Technology Related				1,025.00
<b>Total Supplies</b>				<b>\$5,032.60</b>
<b>800 Other Objects</b>				
810 Dues and Fees				21,822.60
890 Miscellaneous Expenditures				(270.00)
<b>Total Other Objects</b>				<b>\$21,552.60</b>
<b>Total 2511 Supervision of Fiscal Services - Head of Component</b>				<b>\$672,139.01</b>



**General Fund (10)**

	<u>Elementary</u>	<u>Secondary</u>	<u>Federal</u>	<u>Total</u>
<b>2600 Operation and Maintenance of Plant Services</b>				
<b>100 Personnel Services – Salaries</b>				
100 Personnel Services – Salaries				81,874.38
<b>Total Personnel Services – Salaries</b>				<b>\$81,874.38</b>
<b>200 Personnel Services – Employee Benefits</b>				
210 Group Insurance – Contracted Provider				19,527.75
220 Social Security Contributions				5,977.76
230 PSERS Retirement Contributions				26,666.44
250 Unemployment Compensation				51.83
<b>Total Personnel Services – Employee Benefits</b>				<b>\$52,223.78</b>
<b>300 Purchased Professional and Technical Services</b>				
330 Other Professional Services				2,100.00
<b>Total Purchased Professional and Technical Services</b>				<b>\$2,100.00</b>
<b>400 Purchased Property Services</b>				
410 Cleaning Services				1,432,133.44
420 Utility Services				127,687.57
430 Repairs and Maintenance Services				536,033.69
440 Rentals				4,709.76
460 Extermination Services				15,692.08
<b>Total Purchased Property Services</b>				<b>\$2,116,256.54</b>
<b>500 Other Purchased Services</b>				
521 Fire Insurance				94,005.60
522 Automotive Liability Insurance				8,016.30
523 General Property and Liability Insurance				6,195.10
529 Other Insurance				8,199.00
580 Travel				421.75
<b>Total Other Purchased Services</b>				<b>\$116,837.75</b>
<b>600 Supplies</b>				
610 General Supplies	60,909.04	46,717.74		107,626.78
620 Energy				658,468.09
650 Supplies & Fees – Technology Related				1,200.00
<b>Total Supplies</b>	<b>\$60,909.04</b>	<b>\$46,717.74</b>		<b>\$767,294.87</b>
<b>800 Other Objects</b>				
810 Dues and Fees				2,394.70
<b>Total Other Objects</b>				<b>\$2,394.70</b>
<b>Total 2600 Operation and Maintenance of Plant Services</b>	<b>\$60,909.04</b>	<b>\$46,717.74</b>		<b>\$3,138,982.02</b>

**General Fund (10)**

**2610 Supervision of Operation and Maintenance of Plant Services**

	<u>Elementary</u>	<u>Secondary</u>	<u>Federal</u>	<u>Total</u>
<b>100 Personnel Services – Salaries</b>				
100 Personnel Services – Salaries				81,874.38
<b>Total Personnel Services – Salaries</b>				<b>\$81,874.38</b>
<b>200 Personnel Services – Employee Benefits</b>				
210 Group Insurance – Contracted Provider				19,527.75
220 Social Security Contributions				5,977.76
230 PSERS Retirement Contributions				26,666.44
250 Unemployment Compensation				51.83
<b>Total Personnel Services – Employee Benefits</b>				<b>\$52,223.78</b>
<b>300 Purchased Professional and Technical Services</b>				
330 Other Professional Services				2,100.00
<b>Total Purchased Professional and Technical Services</b>				<b>\$2,100.00</b>
<b>400 Purchased Property Services</b>				
410 Cleaning Services				1,432,133.44
420 Utility Services				127,687.57
430 Repairs and Maintenance Services				536,033.69
440 Rentals				4,709.76
460 Extermination Services				15,692.08
<b>Total Purchased Property Services</b>				<b>\$2,116,256.54</b>
<b>500 Other Purchased Services</b>				
521 Fire Insurance				94,005.60
522 Automotive Liability Insurance				8,016.30
523 General Property and Liability Insurance				6,195.10
529 Other Insurance				8,199.00
580 Travel				421.75
<b>Total Other Purchased Services</b>				<b>\$116,837.75</b>
<b>600 Supplies</b>				
610 General Supplies	60,909.04	46,717.74		107,626.78
620 Energy				658,468.09
650 Supplies & Fees – Technology Related				1,200.00
<b>Total Supplies</b>	<b>\$60,909.04</b>	<b>\$46,717.74</b>		<b>\$767,294.87</b>
<b>800 Other Objects</b>				
810 Dues and Fees				2,394.70
<b>Total Other Objects</b>				<b>\$2,394.70</b>
<b>Total 2610 Supervision of Operation and Maintenance of Plant Services</b>	<b>\$60,909.04</b>	<b>\$46,717.74</b>		<b>\$3,138,982.02</b>

**General Fund (10)**

	<u>Elementary</u>	<u>Secondary</u>	<u>Federal</u>	<u>Total</u>
<b>2611 Supervision of Operation and Maintenance of Plant Services – Head of Component</b>				
<b>100 Personnel Services – Salaries</b>				
100 Personnel Services – Salaries				81,874.38
<b>Total Personnel Services – Salaries</b>				<b>\$81,874.38</b>
<b>200 Personnel Services – Employee Benefits</b>				
210 Group Insurance – Contracted Provider				19,527.75
220 Social Security Contributions				5,977.76
230 PSERS Retirement Contributions				26,666.44
250 Unemployment Compensation				51.83
<b>Total Personnel Services – Employee Benefits</b>				<b>\$52,223.78</b>
<b>300 Purchased Professional and Technical Services</b>				
330 Other Professional Services				2,100.00
<b>Total Purchased Professional and Technical Services</b>				<b>\$2,100.00</b>
<b>400 Purchased Property Services</b>				
410 Cleaning Services				1,432,133.44
420 Utility Services				127,687.57
430 Repairs and Maintenance Services				536,033.69
440 Rentals				4,709.76
460 Extermination Services				15,692.08
<b>Total Purchased Property Services</b>				<b>\$2,116,256.54</b>
<b>500 Other Purchased Services</b>				
521 Fire Insurance				94,005.60
522 Automotive Liability Insurance				8,016.30
523 General Property and Liability Insurance				6,195.10
529 Other Insurance				8,199.00
580 Travel				421.75
<b>Total Other Purchased Services</b>				<b>\$116,837.75</b>
<b>600 Supplies</b>				
610 General Supplies	60,909.04	46,717.74		107,626.78
620 Energy				658,468.09
650 Supplies & Fees – Technology Related				1,200.00
<b>Total Supplies</b>	<b>\$60,909.04</b>	<b>\$46,717.74</b>		<b>\$767,294.87</b>
<b>800 Other Objects</b>				
810 Dues and Fees				2,394.70
<b>Total Other Objects</b>				<b>\$2,394.70</b>
<b>Total 2611 Supervision of Operation and Maintenance of Plant Services – Head of Component</b>	<b>\$60,909.04</b>	<b>\$46,717.74</b>		<b>\$3,138,982.02</b>

**General Fund (10)**

	<u>Elementary</u>	<u>Secondary</u>	<u>Federal</u>	<u>Total</u>
<b>2700 Student Transportation Services</b>				
<b>100 Personnel Services – Salaries</b>				
100 Personnel Services – Salaries				39,769.24
<b>Total Personnel Services – Salaries</b>				<b>\$39,769.24</b>
<b>200 Personnel Services – Employee Benefits</b>				
220 Social Security Contributions				2,988.12
230 PSERS Retirement Contributions				12,952.74
<b>Total Personnel Services – Employee Benefits</b>				<b>\$15,940.86</b>
<b>300 Purchased Professional and Technical Services</b>				
310 Official / Administrative Services				30,945.63
<b>Total Purchased Professional and Technical Services</b>				<b>\$30,945.63</b>
<b>500 Other Purchased Services</b>				
513 Contracted Carriers			279,951.80	3,184,705.98
516 Student Transportation Services From the IU				45,617.62
<b>Total Other Purchased Services</b>			<b>\$279,951.80</b>	<b>\$3,230,323.60</b>
<b>600 Supplies</b>				
630 Food				77.55
650 Supplies & Fees – Technology Related				4,300.00
<b>Total Supplies</b>				<b>\$4,377.55</b>
<b>800 Other Objects</b>				
810 Dues and Fees				20.00
<b>Total Other Objects</b>				<b>\$20.00</b>
<b>Total 2700 Student Transportation Services</b>			<b>\$279,951.80</b>	<b>\$3,321,376.88</b>

**General Fund (10)**

	<u>Elementary</u>	<u>Secondary</u>	<u>Federal</u>	<u>Total</u>
<b>2710 Supervision of Student Transportation Services</b>				
<b>100 Personnel Services – Salaries</b>				
100 Personnel Services – Salaries				39,769.24
<b>Total Personnel Services – Salaries</b>				<b>\$39,769.24</b>
<b>200 Personnel Services – Employee Benefits</b>				
220 Social Security Contributions				2,988.12
230 PSERS Retirement Contributions				12,952.74
<b>Total Personnel Services – Employee Benefits</b>				<b>\$15,940.86</b>
<b>300 Purchased Professional and Technical Services</b>				
310 Official / Administrative Services				30,945.63
<b>Total Purchased Professional and Technical Services</b>				<b>\$30,945.63</b>
<b>500 Other Purchased Services</b>				
513 Contracted Carriers			279,951.80	1,988,840.78
516 Student Transportation Services From the IU				45,617.62
<b>Total Other Purchased Services</b>			<b>\$279,951.80</b>	<b>\$2,034,458.40</b>
<b>600 Supplies</b>				
630 Food				77.55
650 Supplies & Fees – Technology Related				4,300.00
<b>Total Supplies</b>				<b>\$4,377.55</b>
<b>800 Other Objects</b>				
810 Dues and Fees				20.00
<b>Total Other Objects</b>				<b>\$20.00</b>
<b>Total 2710 Supervision of Student Transportation Services</b>			<b>\$279,951.80</b>	<b>\$2,125,511.68</b>

**General Fund (10)**

	<u>Elementary</u>	<u>Secondary</u>	<u>Federal</u>	<u>Total</u>
<b>2711 Supervision of Student Transportation Services – Head of Component</b>				
<b>100 Personnel Services – Salaries</b>				
100 Personnel Services – Salaries				39,769.24
<b>Total Personnel Services – Salaries</b>				<b>\$39,769.24</b>
<b>200 Personnel Services – Employee Benefits</b>				
220 Social Security Contributions				2,988.12
230 PSERS Retirement Contributions				12,952.74
<b>Total Personnel Services – Employee Benefits</b>				<b>\$15,940.86</b>
<b>300 Purchased Professional and Technical Services</b>				
310 Official / Administrative Services				30,945.63
<b>Total Purchased Professional and Technical Services</b>				<b>\$30,945.63</b>
<b>500 Other Purchased Services</b>				
513 Contracted Carriers			279,951.80	1,988,840.78
516 Student Transportation Services From the IU				45,617.62
<b>Total Other Purchased Services</b>			<b>\$279,951.80</b>	<b>\$2,034,458.40</b>
<b>600 Supplies</b>				
630 Food				77.55
650 Supplies & Fees – Technology Related				4,300.00
<b>Total Supplies</b>				<b>\$4,377.55</b>
<b>800 Other Objects</b>				
810 Dues and Fees				20.00
<b>Total Other Objects</b>				<b>\$20.00</b>
<b>Total 2711 Supervision of Student Transportation Services – Head of Component</b>			<b>\$279,951.80</b>	<b>\$2,125,511.68</b>

General Fund (10)

2750 Nonpublic Transportation

Elementary

Secondary

Federal

Total

500 Other Purchased Services

513 Contracted Carriers

1,195,865.20

**Total Other Purchased Services**

**\$1,195,865.20**

**Total 2750 Nonpublic Transportation**

**\$1,195,865.20**

**General Fund (10)**

	<u>Elementary</u>	<u>Secondary</u>	<u>Federal</u>	<u>Total</u>
<b>2800 Support Services – Central</b>				
<b>100 Personnel Services – Salaries</b>				
100 Personnel Services – Salaries				20,175.08
<b>Total Personnel Services – Salaries</b>				<b>\$20,175.08</b>
<b>200 Personnel Services – Employee Benefits</b>				
210 Group Insurance – Contracted Provider				49.56
220 Social Security Contributions				1,547.62
230 PSERS Retirement Contributions				6,571.03
<b>Total Personnel Services – Employee Benefits</b>				<b>\$8,168.21</b>
<b>300 Purchased Professional and Technical Services</b>				
323 Professional Educational Services – Other Educational Agencies				390.00
324 Professional Educational Services – Employee Training and Development Services			400.00	5,921.70
330 Other Professional Services				2,499.27
<b>Total Purchased Professional and Technical Services</b>			<b>\$400.00</b>	<b>\$8,810.97</b>
<b>400 Purchased Property Services</b>				
440 Rentals				11,887.95
<b>Total Purchased Property Services</b>				<b>\$11,887.95</b>
<b>500 Other Purchased Services</b>				
530 Communications				71,263.78
580 Travel				249.71
<b>Total Other Purchased Services</b>				<b>\$71,513.49</b>
<b>600 Supplies</b>				
610 General Supplies				332.50
630 Food				2,870.72
650 Supplies & Fees – Technology Related				193,612.30
<b>Total Supplies</b>				<b>\$196,815.52</b>
<b>Total 2800 Support Services – Central</b>			<b>\$400.00</b>	<b>\$317,371.22</b>



General Fund (10)

2830 Staff Services

Elementary

Secondary

Federal

Total

300 Purchased Professional and Technical Services

323 Professional Educational Services – Other Educational Agencies

390.00

324 Professional Educational Services – Employee Training and Development Services

400.00

5,921.70

**Total Purchased Professional and Technical Services**

**\$400.00**

**\$6,311.70**

500 Other Purchased Services

580 Travel

249.71

**Total Other Purchased Services**

**\$249.71**

**Total 2830 Staff Services**

**\$400.00**

**\$6,561.41**

General Fund (10)

	<u>Elementary</u>	<u>Secondary</u>	<u>Federal</u>	<u>Total</u>
<b>2834 Staff Development Services – Non-Instructional, Certified Staff Only</b>				
<b>300 <u>Purchased Professional and Technical Services</u></b>				
324 Professional Educational Services – Employee Training and Development Services			400.00	750.65
<b>Total Purchased Professional and Technical Services</b>			<b>\$400.00</b>	<b>\$750.65</b>
<b>Total 2834 Staff Development Services – Non-Instructional, Certified Staff Only</b>			<b>\$400.00</b>	<b>\$750.65</b>

General Fund (10)

	<u>Elementary</u>	<u>Secondary</u>	<u>Federal</u>	<u>Total</u>
<b>2836 Staff Development Services – Non-Instructional, Non-Certified Staff Only</b>				
<b>300 <u>Purchased Professional and Technical Services</u></b>				
323 Professional Educational Services – Other Educational Agencies				390.00
324 Professional Educational Services – Employee Training and Development Services				5,171.05
<b>Total Purchased Professional and Technical Services</b>				<b>\$5,561.05</b>
<b>500 <u>Other Purchased Services</u></b>				
580 Travel				249.71
<b>Total Other Purchased Services</b>				<b>\$249.71</b>
<b>Total 2836 Staff Development Services – Non-Instructional, Non-Certified Staff Only</b>				<b>\$5,810.76</b>

General Fund (10)

2840 Data Processing Services

Elementary

Secondary

Federal

Total

600 Supplies

650 Supplies & Fees – Technology Related

193,612.30

**Total Supplies**

**\$193,612.30**

**Total 2840 Data Processing Services**

**\$193,612.30**

General Fund (10)

2860 Management Services

Elementary

Secondary

Federal

Total

100 Personnel Services – Salaries

100 Personnel Services – Salaries

20,175.08

**Total Personnel Services – Salaries**

**\$20,175.08**

200 Personnel Services – Employee Benefits

210 Group Insurance – Contracted Provider

49.56

220 Social Security Contributions

1,547.62

230 PSERS Retirement Contributions

6,571.03

**Total Personnel Services – Employee Benefits**

**\$8,168.21**

300 Purchased Professional and Technical Services

330 Other Professional Services

2,499.27

**Total Purchased Professional and Technical Services**

**\$2,499.27**

400 Purchased Property Services

440 Rentals

11,887.95

**Total Purchased Property Services**

**\$11,887.95**

500 Other Purchased Services

530 Communications

71,263.78

**Total Other Purchased Services**

**\$71,263.78**

600 Supplies

610 General Supplies

332.50

630 Food

2,870.72

**Total Supplies**

**\$3,203.22**

**Total 2860 Management Services**

**\$117,197.51**

**General Fund (10)**

**2900 Other Support Services**

Elementary

Secondary

Federal

Total

**500 Other Purchased Services**

595 IU Payments By Withholding

37,650.60

**Total Other Purchased Services**

**\$37,650.60**

**Total 2900 Other Support Services**

**\$37,650.60**

General Fund (10)

2910 Support Services Not Listed Elsewhere In the 2000 Series

Elementary

Secondary

Federal

Total

500 Other Purchased Services

595 IU Payments By Withholding

37,650.60

**Total Other Purchased Services**

**\$37,650.60**

**Total 2910 Support Services Not Listed Elsewhere In the 2000 Series**

**\$37,650.60**

**General Fund (10)**

<b>3000 Operation of Non-Instructional Services</b>	<b><u>Total</u></b>
<b>100 Personnel Services – Salaries</b>	
100 Personnel Services – Salaries	446,758.86
<b>Total Personnel Services – Salaries</b>	<b>\$446,758.86</b>
<b>200 Personnel Services – Employee Benefits</b>	
210 Group Insurance – Contracted Provider	35,123.67
220 Social Security Contributions	33,576.45
230 PSERS Retirement Contributions	96,099.50
<b>Total Personnel Services – Employee Benefits</b>	<b>\$164,799.62</b>
<b>300 Purchased Professional and Technical Services</b>	
330 Other Professional Services	1,800.00
350 Security / Safety Services	6,763.00
390 Other Purchased Professional and Technical Services	41,280.00
<b>Total Purchased Professional and Technical Services</b>	<b>\$49,843.00</b>
<b>400 Purchased Property Services</b>	
430 Repairs and Maintenance Services	13,690.46
440 Rentals	5,690.98
<b>Total Purchased Property Services</b>	<b>\$19,381.44</b>
<b>500 Other Purchased Services</b>	
510 Student Transportation Services	(95.46)
520 Insurance – General	11,499.00
580 Travel	5,714.31
<b>Total Other Purchased Services</b>	<b>\$17,117.85</b>
<b>600 Supplies</b>	
610 General Supplies	44,132.88
620 Energy	427.44
<b>Total Supplies</b>	<b>\$44,560.32</b>
<b>700 Property</b>	
752 Capital Equipment – Original and Additional	295.00
<b>Total Property</b>	<b>\$295.00</b>
<b>800 Other Objects</b>	
810 Dues and Fees	14,281.54
<b>Total Other Objects</b>	<b>\$14,281.54</b>
<b>Total 3000 Operation of Non-Instructional Services</b>	<b>\$757,037.63</b>



General Fund (10)

3200 Student Activities

Elementary                      Secondary                      Federal                      Total

100 Personnel Services – Salaries  
100 Personnel Services – Salaries 446,758.86

**Total Personnel Services – Salaries \$446,758.86**

200 Personnel Services – Employee Benefits  
210 Group Insurance – Contracted Provider 35,123.67  
220 Social Security Contributions 33,576.45  
230 PSERS Retirement Contributions 96,099.50

**Total Personnel Services – Employee Benefits \$164,799.62**

300 Purchased Professional and Technical Services  
330 Other Professional Services 1,800.00  
350 Security / Safety Services 6,763.00  
390 Other Purchased Professional and Technical Services 41,280.00

**Total Purchased Professional and Technical Services \$49,843.00**

400 Purchased Property Services  
430 Repairs and Maintenance Services 13,690.46  
440 Rentals 5,690.98

**Total Purchased Property Services \$19,381.44**

500 Other Purchased Services  
510 Student Transportation Services (95.46)  
520 Insurance – General 11,499.00  
580 Travel 5,714.31

**Total Other Purchased Services \$17,117.85**

600 Supplies  
610 General Supplies 44,132.88  
620 Energy 427.44

**Total Supplies \$44,560.32**

700 Property  
752 Capital Equipment – Original and Additional 295.00

**Total Property \$295.00**

800 Other Objects  
810 Dues and Fees 14,281.54

**Total Other Objects \$14,281.54**

**Total 3200 Student Activities \$757,037.63**

**General Fund (10)**

**5000 Other Expenditures and Financing Uses**

**Total**

**800 Other Objects**

830 Interest 2,878,452.15

880 Refunds of Prior Years' Receipts 199,012.08

**Total Other Objects \$3,077,464.23**

**900 Other Uses of Funds**

910 Redemption of Principal 16,152,768.06

932 Capital Reserve Fund Transfers Applicable To Fund 32 813,603.00

**Total Other Uses of Funds \$16,966,371.06**

**Total 5000 Other Expenditures and Financing Uses \$20,043,835.29**

General Fund (10)

	<u>Elementary</u>	<u>Secondary</u>	<u>Federal</u>	<u>Total</u>
<b>5100 Debt Service / Other Expenditures and Financing Uses</b>				
<b>800 Other Objects</b>				
830 Interest				2,878,452.15
880 Refunds of Prior Years' Receipts				199,012.08
<b>Total Other Objects</b>				<b>\$3,077,464.23</b>
<b>900 Other Uses of Funds</b>				
910 Redemption of Principal				16,152,768.06
<b>Total Other Uses of Funds</b>				<b>\$16,152,768.06</b>
<b>Total 5100 Debt Service / Other Expenditures and Financing Uses</b>				<b>\$19,230,232.29</b>

LEA : 114061503 Daniel Boone Area SD

Printed 1/4/2019 3:56:36 PM

**General Fund (10)**

**5110 Debt Service**

Elementary

Secondary

Federal

Total

**800 Other Objects**

830 Interest

2,870,863.69

**Total Other Objects**

**\$2,870,863.69**

**900 Other Uses of Funds**

910 Redemption of Principal

2,069,084.96

**Total Other Uses of Funds**

**\$2,069,084.96**

**Total 5110 Debt Service**

**\$4,939,948.65**

LEA : 114061503 Daniel Boone Area SD

Printed 1/4/2019 3:56:36 PM

**General Fund (10)**

	<u>Elementary</u>	<u>Secondary</u>	<u>Federal</u>	<u>Total</u>
<b>5120 Debt Service – Refunded Bonds</b>				
<b>800 <u>Other Objects</u></b>				
830 Interest				7,588.46
<b>Total Other Objects</b>				<b>\$7,588.46</b>
<b>900 <u>Other Uses of Funds</u></b>				
910 Redemption of Principal				14,083,683.10
<b>Total Other Uses of Funds</b>				<b>\$14,083,683.10</b>
<b>Total 5120 Debt Service – Refunded Bonds</b>				<b>\$14,091,271.56</b>

General Fund (10)

5130 Refund of Prior Year Revenues / Receipts	<u>Elementary</u>	<u>Secondary</u>	<u>Federal</u>	<u>Total</u>
800 <u>Other Objects</u>				
880 Refunds of Prior Years' Receipts				199,012.08
<b>Total Other Objects</b>				<b>\$199,012.08</b>
<b>Total 5130 Refund of Prior Year Revenues / Receipts</b>				<b>\$199,012.08</b>

LEA : 114061503 Daniel Boone Area SD

Printed 1/4/2019 3:56:36 PM

General Fund (10)

	<u>Elementary</u>	<u>Secondary</u>	<u>Federal</u>	<u>Total</u>
<b>5200 Interfund Transfers – Out</b>				
<b>900 Other Uses of Funds</b>				
932 Capital Reserve Fund Transfers Applicable To Fund 32				813,603.00
<b>Total Other Uses of Funds</b>				<b>\$813,603.00</b>
<b>Total 5200 Interfund Transfers – Out</b>				<b>\$813,603.00</b>

LEA : 114061503 Daniel Boone Area SD

Printed 1/4/2019 3:56:36 PM

General Fund (10)

	<u>Elementary</u>	<u>Secondary</u>	<u>Federal</u>	<u>Total</u>
<b>5230 Capital Projects Fund Transfers</b>				
<b>900 Other Uses of Funds</b>				
932 Capital Reserve Fund Transfers Applicable To Fund 32				813,603.00
<b>Total Other Uses of Funds</b>				<b>\$813,603.00</b>
<b>Total 5230 Capital Projects Fund Transfers</b>				<b>\$813,603.00</b>



LEA : 114061503 Daniel Boone Area SD

Printed 1/4/2019 3:56:30 PM

**Public Purpose (Expendable) Trust Fund (27)**

**2000 Support Services**

**600 Supplies**

610 General Supplies

**Total Supplies**

**Total 2000 Support Services**

Total

30,334.00

**\$30,334.00**

**\$30,334.00**

LEA : 114061503 Daniel Boone Area SD

Printed 1/4/2019 3:56:30 PM

Public Purpose (Expendable) Trust Fund (27)

2300 Support Services – Administration

	<u>Elementary</u>	<u>Secondary</u>	<u>Federal</u>	<u>Total</u>
600 <u>Supplies</u>				
610 General Supplies		30,334.00		30,334.00
<b>Total Supplies</b>		<b>\$30,334.00</b>		<b>\$30,334.00</b>
<b>Total 2300 Support Services – Administration</b>		<b>\$30,334.00</b>		<b>\$30,334.00</b>

LEA : 114061503 Daniel Boone Area SD

Printed 1/4/2019 3:56:30 PM

Public Purpose (Expendable) Trust Fund (27)

2380 Office of the Principal Services

	<u>Elementary</u>	<u>Secondary</u>	<u>Federal</u>	<u>Total</u>
600 <u>Supplies</u>				
610 General Supplies		30,334.00		30,334.00
<b>Total Supplies</b>		<b>\$30,334.00</b>		<b>\$30,334.00</b>
<b>Total 2380 Office of the Principal Services</b>		<b>\$30,334.00</b>		<b>\$30,334.00</b>

LEA : 114061503 Daniel Boone Area SD

Printed 1/4/2019 3:56:32 PM

**Capital Reserve Fund - § 1431 (32)**

**2000 Support Services**

**400 Purchased Property Services**

430 Repairs and Maintenance Services

408,870.71

**Total Purchased Property Services**

**\$408,870.71**

**600 Supplies**

610 General Supplies

2,029.00

**Total Supplies**

**\$2,029.00**

**700 Property**

752 Capital Equipment – Original and Additional

248,385.31

762 Capitalized Equipment - Replacement

20,610.56

**Total Property**

**\$268,995.87**

**Total 2000 Support Services**

**\$679,895.58**

LEA : 114061503 Daniel Boone Area SD

Printed 1/4/2019 3:56:32 PM

Capital Reserve Fund - § 1431 (32)

2300 Support Services – Administration

	<u>Elementary</u>	<u>Secondary</u>	<u>Federal</u>	<u>Total</u>
<b>600 Supplies</b>				
610 General Supplies		2,029.00		2,029.00
<b>Total Supplies</b>		<b>\$2,029.00</b>		<b>\$2,029.00</b>
<b>700 Property</b>				
752 Capital Equipment – Original and Additional		215,757.31		215,757.31
<b>Total Property</b>		<b>\$215,757.31</b>		<b>\$215,757.31</b>
<b>Total 2300 Support Services – Administration</b>		<b>\$217,786.31</b>		<b>\$217,786.31</b>

LEA : 114061503 Daniel Boone Area SD

Printed 1/4/2019 3:56:32 PM

Capital Reserve Fund - § 1431 (32)

2380 Office of the Principal Services

	<u>Elementary</u>	<u>Secondary</u>	<u>Federal</u>	<u>Total</u>
<b>600 Supplies</b>				
610 General Supplies		2,029.00		2,029.00
<b>Total Supplies</b>		<b>\$2,029.00</b>		<b>\$2,029.00</b>
<b>700 Property</b>				
752 Capital Equipment – Original and Additional		215,757.31		215,757.31
<b>Total Property</b>		<b>\$215,757.31</b>		<b>\$215,757.31</b>
<b>Total 2380 Office of the Principal Services</b>		<b>\$217,786.31</b>		<b>\$217,786.31</b>

LEA : 114061503 Daniel Boone Area SD

Printed 1/4/2019 3:56:32 PM

Capital Reserve Fund - § 1431 (32)

2600 Operation and Maintenance of Plant Services

Elementary

Secondary

Federal

Total

400 Purchased Property Services

430 Repairs and Maintenance Services

408,870.71

**Total Purchased Property Services**

**\$408,870.71**

700 Property

752 Capital Equipment – Original and Additional

32,628.00

762 Capitalized Equipment - Replacement

20,610.56

**Total Property**

**\$53,238.56**

**Total 2600 Operation and Maintenance of Plant Services**

**\$462,109.27**

LEA : 114061503 Daniel Boone Area SD

Printed 1/4/2019 3:56:32 PM

Capital Reserve Fund - § 1431 (32)

2610 Supervision of Operation and Maintenance of Plant Services

Elementary

Secondary

Federal

Total

400 Purchased Property Services

430 Repairs and Maintenance Services

408,870.71

**Total Purchased Property Services**

**\$408,870.71**

700 Property

752 Capital Equipment – Original and Additional

32,628.00

762 Capitalized Equipment - Replacement

20,610.56

**Total Property**

**\$53,238.56**

**Total 2610 Supervision of Operation and Maintenance of Plant Services**

**\$462,109.27**



LEA : 114061503 Daniel Boone Area SD

Printed 1/4/2019 3:56:32 PM

Capital Reserve Fund - § 1431 (32)

2611 Supervision of Operation and Maintenance of Plant Services – Head of Component

Elementary

Secondary

Federal

Total

400 Purchased Property Services

430 Repairs and Maintenance Services

408,870.71

**Total Purchased Property Services**

**\$408,870.71**

700 Property

752 Capital Equipment – Original and Additional

32,628.00

762 Capitalized Equipment - Replacement

20,610.56

**Total Property**

**\$53,238.56**

**Total 2611 Supervision of Operation and Maintenance of Plant Services – Head of Component**

**\$462,109.27**

**Capital Reserve Fund - § 1431 (32)**

**4000 Facilities Acquisition, Construction and Improvement Services**

**Total**

**300 Purchased Professional and Technical Services**

330 Other Professional Services

34,244.92

**Total Purchased Professional and Technical Services**

**\$34,244.92**

**Total 4000 Facilities Acquisition, Construction and Improvement Services**

**\$34,244.92**

LEA : 114061503 Daniel Boone Area SD

Printed 1/4/2019 3:56:34 PM

Capital Reserve Fund - § 1431 (32)

4400 Architecture and Engineering Services / Educational Specifications – Improvements

Elementary

Secondary

Federal

Total

300 Purchased Professional and Technical Services

330 Other Professional Services

34,244.92

**Total Purchased Professional and Technical Services**

**\$34,244.92**

**Total 4400 Architecture and Engineering Services / Educational Specifications – Improvements**

**\$34,244.92**

	<u>General Fund(10)</u>	<u>Public Purpose Trust(27)</u>	<u>Other Compt Approved (28)</u>	<u>Athletic / Activity(29)</u>	<u>Capital Reserve (690, 1850)(31)</u>
<b>1000 Instruction</b>					
1100 Regular Programs - Elementary / Secondary	23,893,707.03				
1200 Special Programs - Elementary / Secondary	8,067,585.05				
1300 Vocational Education	1,112,538.18				
1400 Other Instructional Programs - Elementary / Secondary	16,063.21				
1500 Nonpublic School Programs	20,163.00				
<b>Total Instruction</b>	<b>\$33,110,056.47</b>				
<b>2000 Support Services</b>					
2100 Support Services - Students	1,543,548.18				
2200 Support Services - Instructional Staff	2,272,421.30				
2300 Support Services - Administration	2,777,900.21		30,334.00		
2400 Support Services - Pupil Health	595,339.55				
2500 Support Services - Business	672,139.01				
2600 Operation and Maintenance of Plant Services	3,138,982.02				
2700 Student Transportation Services	3,321,376.88				
2800 Support Services - Central	317,371.22				
2900 Other Support Services	37,650.60				
<b>Total Support Services</b>	<b>\$14,676,728.97</b>		<b>\$30,334.00</b>		
<b>3000 Operation of Non-Instructional Services</b>					
3200 Student Activities	757,037.63				
<b>Total Operation of Non-Instructional Services</b>	<b>\$757,037.63</b>				
<b>4000 Facilities Acquisition, Construction and Improvement Services</b>					
4400 Architecture and Engineering Services / Educational Specifications - Improvements					
<b>Total Facilities Acquisition, Construction and Improvement Services</b>					
<b>5000 Other Expenditures and Financing Uses</b>					
5100 Debt Service / Other Expenditures and Financing Uses	19,230,232.29				
5200 Interfund Transfers - Out	813,603.00				
<b>Total Other Expenditures and Financing Uses</b>	<b>\$20,043,835.29</b>				
<b>TOTAL ACTUAL EXPENDITURES &amp; OTHER FINANCING USES</b>	<b>\$68,587,658.36</b>		<b>\$30,334.00</b>		

LEA : 114061503 Daniel Boone Area SD

Printed 1/4/2019 3:56:39 PM

	<u>Capital Reserve (1431)(32)</u>	<u>Other Capital Projects Fund(39)</u>	<u>Debt Service(40)</u>	<u>Permanent(90)</u>	<u>Total</u>
<b>1000 Instruction</b>					
1100 Regular Programs - Elementary / Secondary					23,893,707.03
1200 Special Programs - Elementary / Secondary					8,067,585.05
1300 Vocational Education					1,112,538.18
1400 Other Instructional Programs - Elementary / Secondary					16,063.21
1500 Nonpublic School Programs					20,163.00
<b>Total Instruction</b>					<b>\$33,110,056.47</b>
<b>2000 Support Services</b>					
2100 Support Services - Students					1,543,548.18
2200 Support Services - Instructional Staff					2,272,421.30
2300 Support Services - Administration	217,786.31				3,026,020.52
2400 Support Services - Pupil Health					595,339.55
2500 Support Services - Business					672,139.01
2600 Operation and Maintenance of Plant Services	462,109.27				3,601,091.29
2700 Student Transportation Services					3,321,376.88
2800 Support Services - Central					317,371.22
2900 Other Support Services					37,650.60
<b>Total Support Services</b>	<b>\$679,895.58</b>				<b>\$15,386,958.55</b>
<b>3000 Operation of Non-Instructional Services</b>					
3200 Student Activities					757,037.63
<b>Total Operation of Non-Instructional Services</b>					<b>\$757,037.63</b>
<b>4000 Facilities Acquisition, Construction and Improvement Services</b>					
4400 Architecture and Engineering Services / Educational Specifications - Improvements	34,244.92				34,244.92
<b>Total Facilities Acquisition, Construction and Improvement Services</b>	<b>\$34,244.92</b>				<b>\$34,244.92</b>
<b>5000 Other Expenditures and Financing Uses</b>					
5100 Debt Service / Other Expenditures and Financing Uses					19,230,232.29
5200 Interfund Transfers - Out					813,603.00
<b>Total Other Expenditures and Financing Uses</b>					<b>\$20,043,835.29</b>
<b>TOTAL ACTUAL EXPENDITURES &amp; OTHER FINANCING USES</b>	<b>\$714,140.50</b>				<b>\$69,332,132.86</b>

LEA : 114061503 Daniel Boone Area SD

Printed 1/4/2019 3:56:44 PM

**PSERS Salary Data (Salary Data should relate to the General Fund only)**

<b>Amount Description</b>	<b>Amount</b>
Total Salary Base for salaries subject to PSERS withholding	22,005,965.07
Total Federally Funded salaries subject to PSERS withholding	290,179.47
	<hr/>

**Title I Expenditure Data**

<b>Amount Description</b>	<b>Amount</b>
Expenditures Funded with Current Title I Funds	338,209.00
Expenditures Funded with Carry over Title I Funds	
<b>Total Title I Expenditure Data</b>	<hr/> <b>\$338,209.00</b> <hr/>

**Benefits for Staff Relative to Collective Bargaining Agreements**

	OBJECT	COVERED	NOT COVERED	TOTAL
<b>10 General Fund</b>	No Self Insurance data to report			
	211 Medical Insurance	3,504,603.97	309,365.04	3,813,969.01
	212 Dental Insurance	154,682.58	10,697.64	165,380.22
	215 Eye Care Insurance	8,665.20	669.60	9,334.80
	216 Prescription Insurance			
	271 Self-Insurance Medical Benefits			
	272 Self-Insurance Dental Benefits			
	275 Self-Insurance Eye Care Benefits			
	276 Self-Insurance Prescription Benefits			
	<b>FUND TOTAL</b>	<b>\$3,667,951.75</b>	<b>\$320,732.28</b>	<b>\$3,988,684.03</b>
<b>50 Enterprise Fund</b>	No Self Insurance data to report			
	211 Medical Insurance			
	212 Dental Insurance			
	215 Eye Care Insurance			
	216 Prescription Insurance			
	271 Self-Insurance Medical Benefits			
	272 Self-Insurance Dental Benefits			
	275 Self-Insurance Eye Care Benefits			
	276 Self-Insurance Prescription Benefits			
	<b>FUND TOTAL</b>			
<b>60 Internal Service Fund</b>	No Self Insurance data to report			
	211 Medical Insurance			
	212 Dental Insurance			
	215 Eye Care Insurance			
	216 Prescription Insurance			
	271 Self-Insurance Medical Benefits			
	272 Self-Insurance Dental Benefits			
	275 Self-Insurance Eye Care Benefits			
	276 Self-Insurance Prescription Benefits			
	<b>FUND TOTAL</b>			
<b>Total of All Funds</b>		<b>\$3,667,951.75</b>	<b>\$320,732.28</b>	<b>\$3,988,684.03</b>

LEA : 114061503 Daniel Boone Area SD

Printed 1/4/2019 3:56:46 PM

Function	Special Education (Prior Year)	Nonspecial Education (Prior Year)	Total (Prior Year)	Special Education (Current Year)	Nonspecial Education (Current Year)	Total (Current Year)
2120 Guidance Services	183,394.58	1,039,241.62	1,222,636.20	195,320.52	1,025,809.70	1,221,130.22
2140 Psychological Services	121,719.36	121,719.36	243,438.72	111,284.03	111,284.00	222,568.03
2150 Speech Pathology and Audiology Services						
2160 Social Work Services						
2260 Instruction and Curriculum Development Services	44,782.24	403,040.13	447,822.37	54,527.64	690,752.92	745,280.56
2350 Legal and Accounting Services	44,553.64	218,641.16	263,194.80	21,435.40	105,191.45	126,626.85
2420 Medical Services						
2440 Nursing Services	90,142.37	510,806.41	600,948.78	95,254.33	500,085.22	595,339.55
2700 Student Transportation Services	913,841.35	1,965,543.46	2,879,384.81	968,671.83	2,093,451.25	3,062,123.08
<b>Total</b>	<b>\$1,398,433.54</b>	<b>\$4,258,992.14</b>	<b>\$5,657,425.68</b>	<b>\$1,446,493.75</b>	<b>\$4,526,574.54</b>	<b>\$5,973,068.29</b>



(PRINCIPAL AMOUNTS ONLY)

**GOVERNMENTAL FUNDS/ ACTIVITIES**

	Short-Term Borrowing	General Obligation Bonds/Notes	Authority Building Obligations	Other Long-Term Debt	Other Post-Employment Benefits (OPEB)	Compensated Absences	Net Pension Liability	Total
1. Debt at Beginning of Fiscal Year		74,960,000.00		2,465,480.00	1,359,771.00	765,901.60	88,459,000.00	168,010,152.60
2. Additional Debt Incurred During Year		13,490,000.00			5,924,489.00	28,152.40		19,442,641.40
3. Retirements and Repayments		15,035,000.00		434,085.00			8,252,000.00	23,721,085.00
4. Debt at End of Fiscal Year		73,415,000.00		2,031,395.00	7,284,260.00	794,054.00	80,207,000.00	163,731,709.00
5. Accreted Interest at End Of Fiscal Year								
6. Total Debt and Accreted Interest		73,415,000.00		2,031,395.00	7,284,260.00	794,054.00	80,207,000.00	163,731,709.00
7. Current Portion P&I - Due within 1 year		5,477,050.00		536,662.00				6,013,712.00
8. Interest Paid during current fiscal year		2,768,288.00		102,577.00				2,870,865.00

(PRINCIPAL AMOUNTS ONLY)

**PROPRIETARY FUNDS**

- 1. Debt at Beginning of Fiscal Year
- 2. Additional Debt Incurred During Year
- 3. Retirements and Repayments
- 4. Debt at End of Fiscal Year
- 5. Accreted Interest at End Of Fiscal Year
- 6. Total Debt and Accreted Interest
- 7. Current Portion P&I - Due within 1 year
- 8. Interest Paid during current fiscal year

**Total Principal and Interest Payments Made by Your School - All Funds**

Function	Fund		Principal (910)	Principal (920)	Interest (830)	Total (Principal +Interest)	Misc Other Uses (990)
5110	10	General Fund	2,069,084.96		2,870,863.69	4,939,948.65	
5110	20	Special Revenue Funds					
5110	30	Capital Projects Funds					
5110	40	Debt Service Fund					
5110	90	Permanent Fund					
5120	10	General Fund	14,083,683.10		7,588.46	14,091,271.56	
5120	20	Special Revenue Funds					
5120	30	Capital Projects Funds					
5120	40	Debt Service Fund					
<b>Total Debt Payments - Governmental Funds</b>			<b>\$16,152,768.06</b>		<b>\$2,878,452.15</b>	<b>\$19,031,220.21</b>	

Function	Fund		Principal (910)	Principal (920)	Interest (830)	Total (Principal +Interest)	Misc Other Uses (990)
5110	50	Enterprise Fund					
5110	60	Internal Service Fund					
5120	50	Enterprise Fund					
5120	60	Internal Service Fund					
<b>Total Debt Payments - Proprietary Funds</b>							

**Debt Details**  
**Governmental Funds/ Activities**

Debt Category	Debt Issue Date (MM/YYYY)	Debt at Beginning of Fiscal Year	Principal Amounts Only		Debt at End of Fiscal Year	Current Portion Due Within One Year (Principal and Interest)	Interest Paid During Fiscal Year
			Additions	Reductions / Repayments			
General Obligation Bonds/Notes – CIB	07/2017		13,490,000.00	1,260,000.00	12,230,000.00	2,571,046.00	218,209.00
General Obligation Bonds/Notes – CIB	02/2017	31,685,000.00		160,000.00	31,525,000.00	1,757,300.00	1,619,033.00
General Obligation Bonds/Notes – CIB	01/2016	9,990,000.00		5,000.00	9,985,000.00	317,468.00	312,523.00
General Obligation Bonds/Notes – CIB	01/2015	9,990,000.00		105,000.00	9,885,000.00	417,120.00	308,278.00
General Obligation Bonds/Notes – CIB	12/2014	9,895,000.00		105,000.00	9,790,000.00	414,116.00	310,245.00
General Obligation Bonds/Notes – CIB	08/2008	13,400,000.00		13,400,000.00			
Extended Term Financing Agreements		2,465,480.00		434,085.00	2,031,395.00	536,662.00	102,577.00
Compensated Absences		765,901.60	28,152.40		794,054.00		
Other Post-Employment Benefits (OPEB)		1,359,771.00	5,924,489.00		7,284,260.00		
Net Pension Liability		88,459,000.00		8,252,000.00	80,207,000.00		
<b>Totals for Debt Entered:</b>		<b>\$168,010,152.60</b>	<b>\$19,442,641.40</b>	<b>\$23,721,085.00</b>	<b>\$163,731,709.00</b>	<b>\$6,013,712.00</b>	<b>\$2,870,865.00</b>

**General Fund (10)**

**Section 1: Tuition/Purchased Services as Reported within Expenditure Detail**

	<b>Amount</b>
Tuition Reported in General Fund Expenditures 1000-560	3,889,173.47
Purchased Services in General Fund Expenditures 1000-594 and 1000-597	600.00
<b>Section 1 Total</b>	<b>\$3,889,773.47</b>

**Section 2: Tuition Paid to Institution Types During Fiscal Year**

	<b>Tuition Paid For Nonspecial Education</b>	<b>Tuition Paid For Special Education</b>	<b>Total</b>
1 1306 Institutions			
2 Institutionalized Children's Programs			
3 Juveniles Incarcerated in Adult Facilities			
4 Residential Treatment Facilities			
5 Other Local Education Agencies	284,684.50	1,097,157.35	1,381,841.85
6 Brick and Mortar Charter Schools			
7 Cyber Charter Schools	861,498.56	311,680.64	1,173,179.20
8 Career and Technology Centers	962,367.00	75,342.60	1,037,709.60
9 Approved Private Schools		264,223.96	264,223.96
10 PA Chartered Schools for the Deaf and Blind			
11 Private Residential Rehabilitative Institutions	30,685.36		30,685.36
12 Juvenile Detention Centers			
13 Special Program Jointures			
14 Other Tuition Not Included Elsewhere In This Section	600.00	1,533.50	2,133.50
<b>Section 2 Total</b>	<b>\$2,139,835.42</b>	<b>\$1,749,938.05</b>	<b>\$3,889,773.47</b>

LEA : 114061503 Daniel Boone Area SD

Printed 1/4/2019 3:56:49 PM

**Food Service / Cafeteria Operations Fund (51)**

**3000 Operation of Non-Instructional Services**

**Total**

**300 Purchased Professional and Technical Services**

330 Other Professional Services 122.00

**Total Purchased Professional and Technical Services**

**\$122.00**

**400 Purchased Property Services**

430 Repairs and Maintenance Services 1,946.00

460 Extermination Services 1,241.00

**Total Purchased Property Services**

**\$3,187.00**

**500 Other Purchased Services**

591 Services Purchased Locally 1,063,827.00

599 Other Miscellaneous Purchased Services 33,500.00

**Total Other Purchased Services**

**\$1,097,327.00**

**600 Supplies**

610 General Supplies 72,783.00

650 Supplies & Fees – Technology Related 8,170.00

**Total Supplies**

**\$80,953.00**

**700 Property**

740 Depreciation 11,064.00

**Total Property**

**\$11,064.00**

**800 Other Objects**

890 Miscellaneous Expenditures 11,449.00

**Total Other Objects**

**\$11,449.00**

**Total 3000 Operation of Non-Instructional Services**

**\$1,204,102.00**

LEA : 114061503 Daniel Boone Area SD

Printed 1/4/2019 3:56:49 PM

**Food Service / Cafeteria Operations Fund (51)**

	<u>Elementary</u>	<u>Secondary</u>	<u>Federal</u>	<u>Total</u>
<b>3100 Food Services</b>				
<b>300 <u>Purchased Professional and Technical Services</u></b>				
330 Other Professional Services				122.00
<b>Total Purchased Professional and Technical Services</b>				<b>\$122.00</b>
<b>400 <u>Purchased Property Services</u></b>				
430 Repairs and Maintenance Services				1,946.00
460 Extermination Services				1,241.00
<b>Total Purchased Property Services</b>				<b>\$3,187.00</b>
<b>500 <u>Other Purchased Services</u></b>				
591 Services Purchased Locally				1,063,827.00
599 Other Miscellaneous Purchased Services				33,500.00
<b>Total Other Purchased Services</b>				<b>\$1,097,327.00</b>
<b>600 <u>Supplies</u></b>				
610 General Supplies				72,783.00
650 Supplies & Fees – Technology Related				8,170.00
<b>Total Supplies</b>				<b>\$80,953.00</b>
<b>700 <u>Property</u></b>				
740 Depreciation				11,064.00
<b>Total Property</b>				<b>\$11,064.00</b>
<b>800 <u>Other Objects</u></b>				
890 Miscellaneous Expenditures				11,449.00
<b>Total Other Objects</b>				<b>\$11,449.00</b>
<b>Total 3100 Food Services</b>				<b>\$1,204,102.00</b>

	<u>Food Service(51)</u>	<u>Child Care Operations(52)</u>	<u>Other Enterprise(58)</u>	<u>Internal Service(60)</u>	<u>Total</u>
<b>3000 <u>Operation of Non-Instructional Services</u></b>					
3100 Food Services	1,204,102.00				1,204,102.00
<b>Total Operation of Non-Instructional Services</b>	<b>\$1,204,102.00</b>				<b>\$1,204,102.00</b>
<b>TOTAL ACTUAL EXPENDITURES &amp; OTHER FINANCING USES</b>	<b>\$1,204,102.00</b>				<b>\$1,204,102.00</b>